

# **Roller Shades**

## **Installation Instructions**

NO VALANCE (Pages 1 - 10)

- Continuous Chain Loop
- Safety Device (Page 5)
- Cordless

FABRIC WRAPPED CORNICE (Page 11)

INTERMEDIATE BRACKET (Pages 12 - 14)

SEMI-OPEN CASSETTE (Pages 15 - 20)

- Continuous Chain Loop
- Cordless

FASCIA (Pages 21 - 30)

- Continuous Chain Loop
- Cordless

MOTORIZED (Pages 31 - 49)

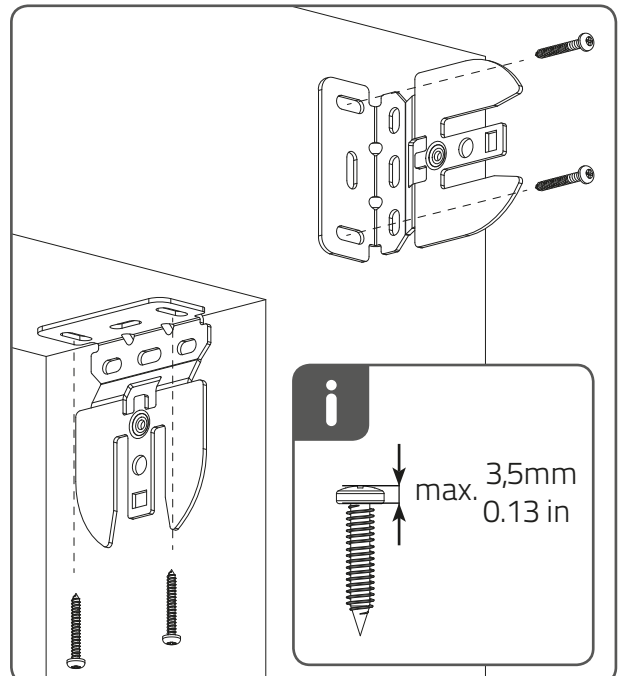
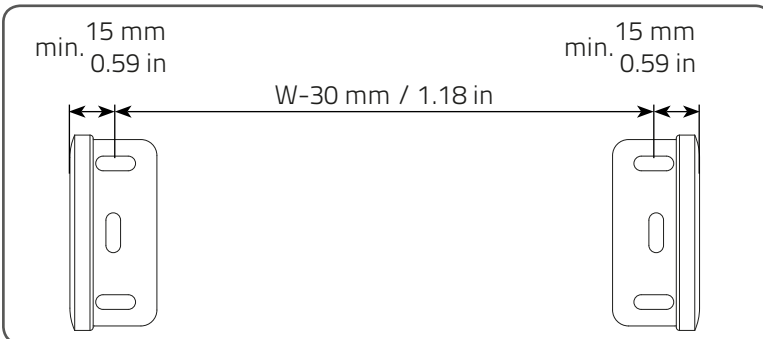
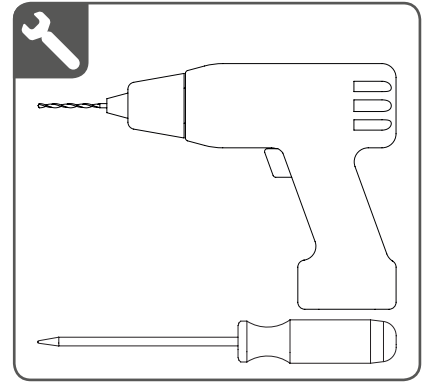
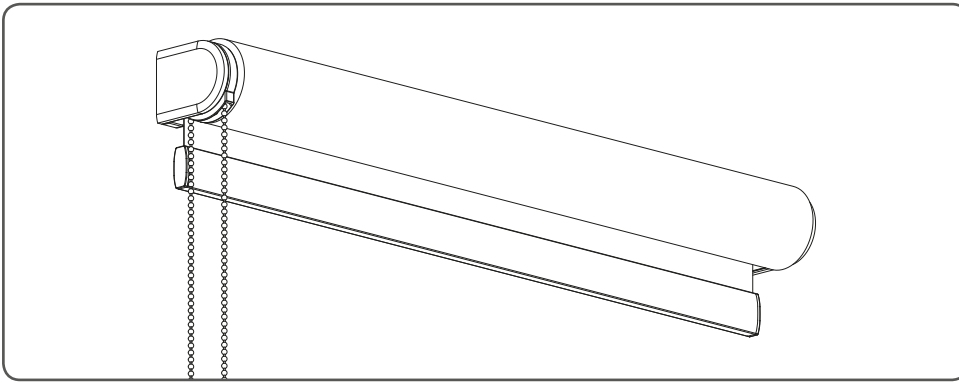
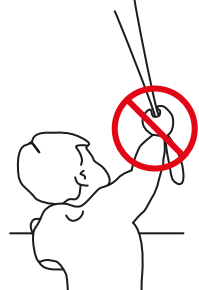
- MotionBlinds Bluetooth app (Pages 47 - 49)

## Installation - Open Roll with Continuous Chain

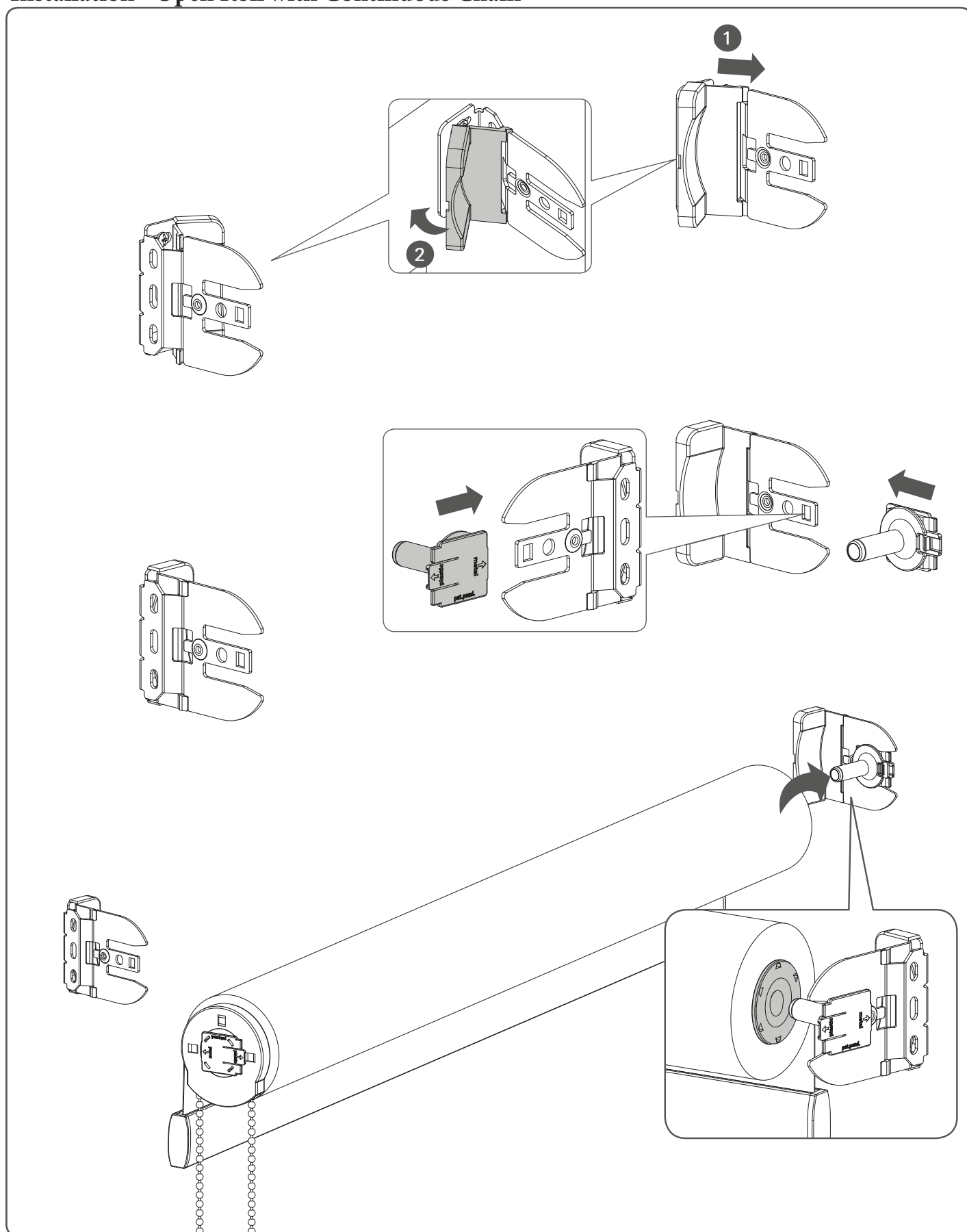
Read the instructions carefully before assembling and using the product.  
Assembling process can be completed by non-professionals. For indoor use only.

### **WARNING**

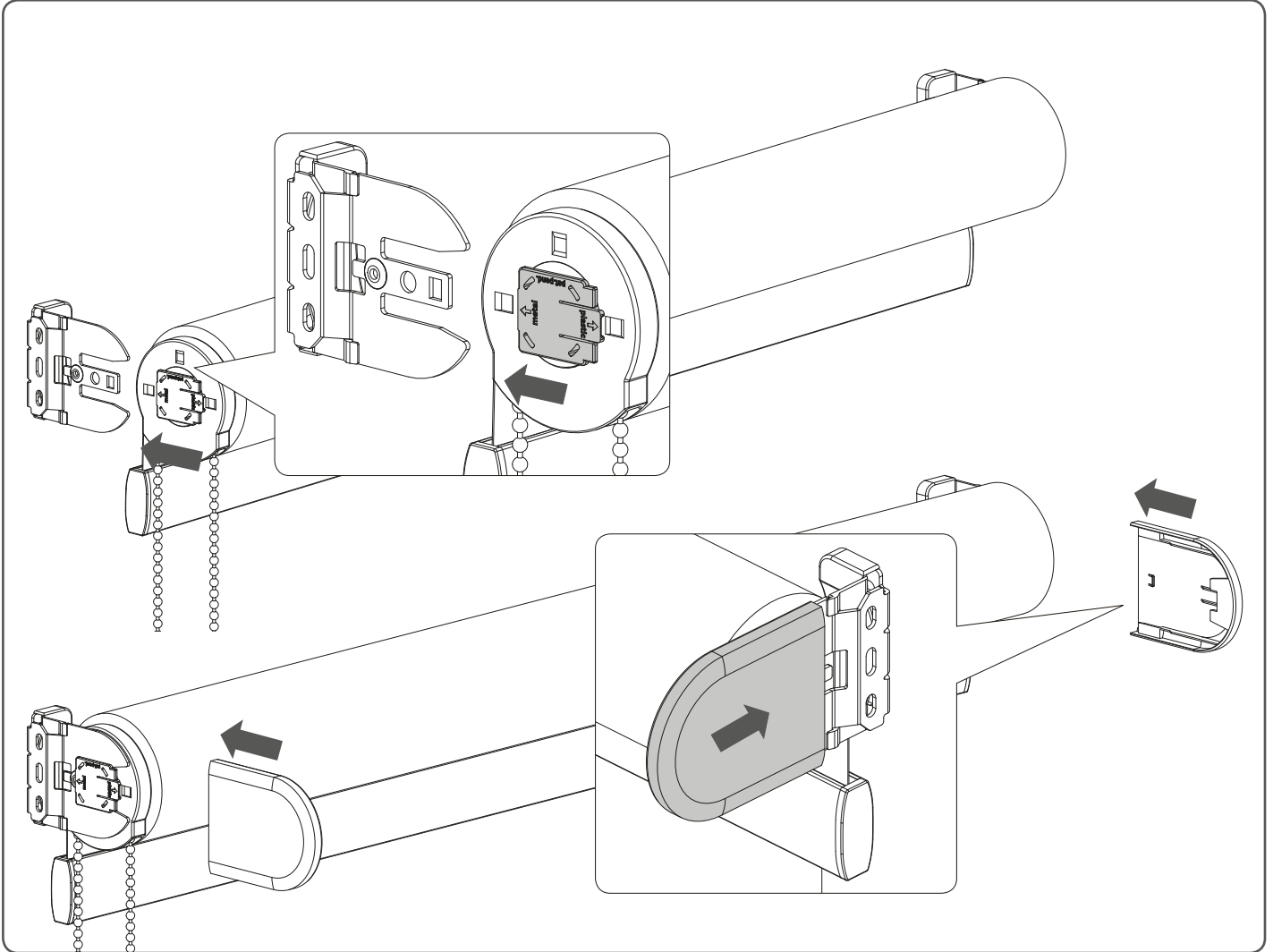
- Young children can strangle in the loop of pull cords, chains and tapes, and cords that operate window coverings.
- To avoid strangulation and entanglement, keep cords out of the reach of young children. Cords may become wrapped around a child's neck
- Move beds, cots and furniture away from window covering cords.
- Do not tie cords together.  
Make sure cords do not twist together and form a loop.



### Installation - Open Roll with Continuous Chain



## Installation - Open Roll with Continuous Chain



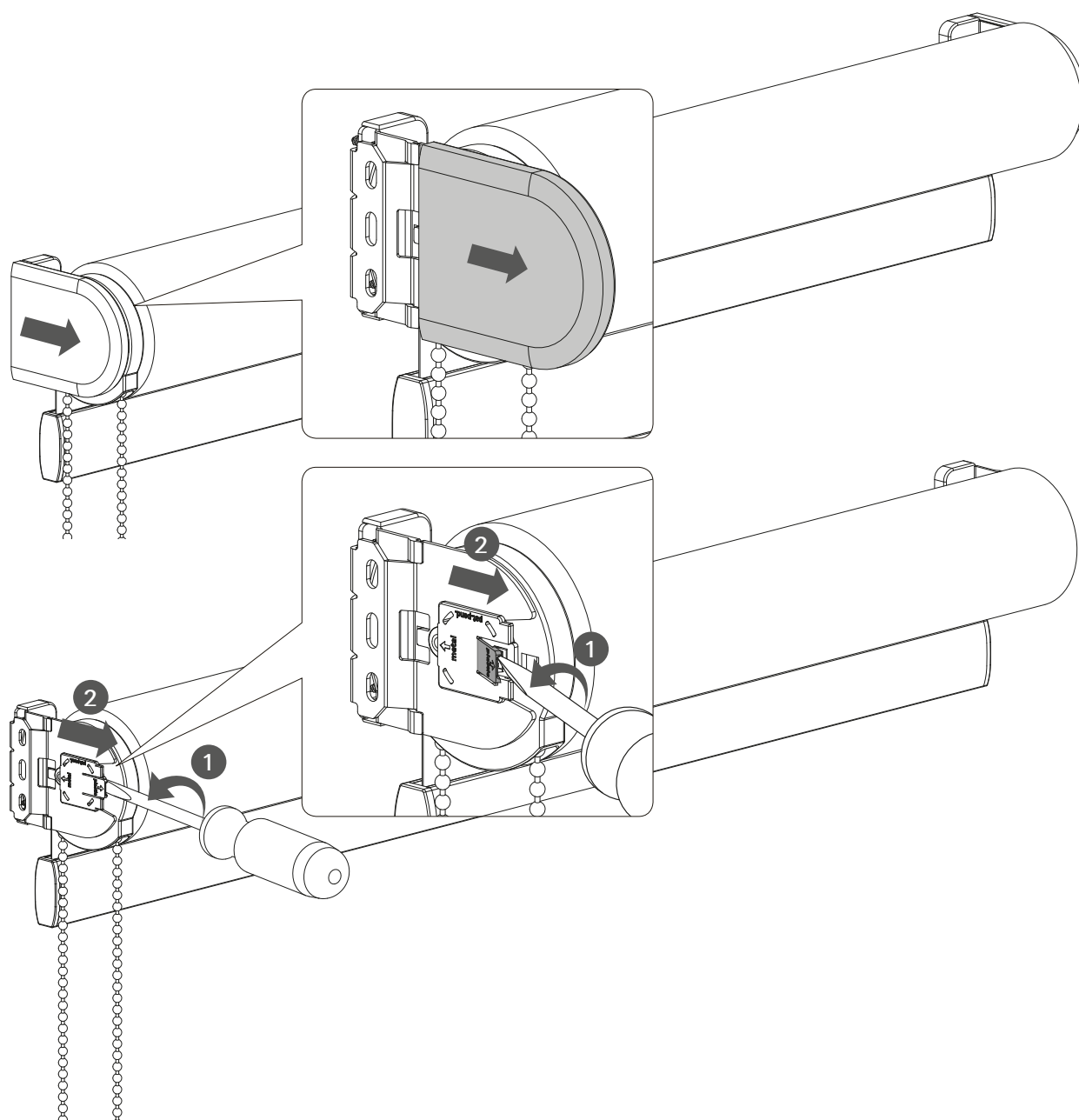
### **⚠ WARNING**

Install the child safety device as specified in the childsafe manual.





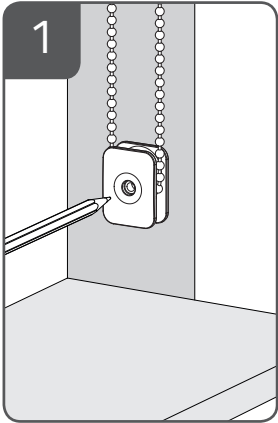
## Removal - Open Roll with Continuous Chain



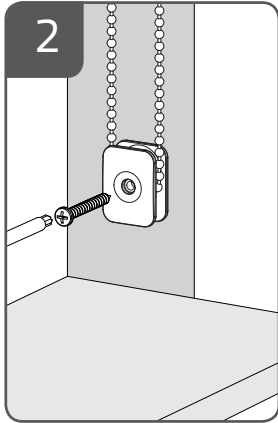
# WARNING

The Safety Device is a fixed tension device for operating ball-chains that form a continuous loop. This device must be applied in chain loops that do not have a breakaway design. The safety device prevents free-hanging loops in operating chains. Install the safety device at the maximum distance possible from the control mechanism to prevent slack in the loop. Upon delivery to the end user, the device must be attached to the chain. The tensioning device is provided with fasteners for installation to wooden wall substrates. Please read the following information when installing the tensioning device. For other wall types please use appropriate screws that are suitable for your wall.

## A: Inside Mount: Fully recessed shade and safety device

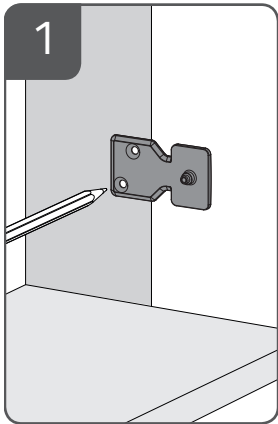


Position so there is no slack within the loop.

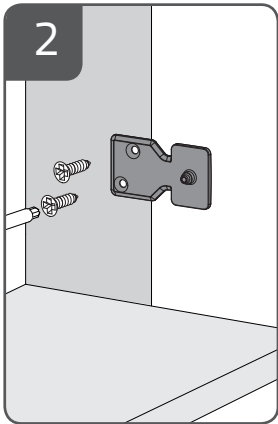


Mount the safety device.

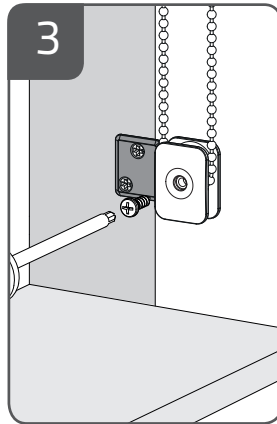
## B: Inside Mount: Partially recessed shade and safety device



Position so there is no slack within the loop.

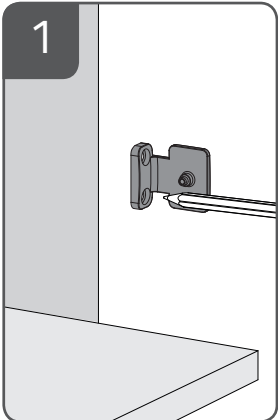


Secure mounting bracket.

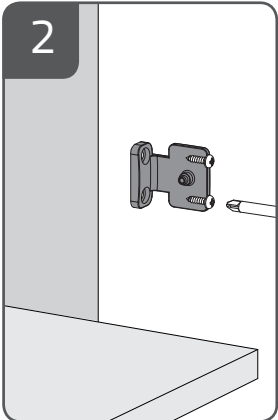


Mount safety device mounting bracket.

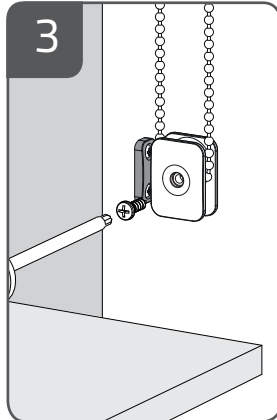
## C: Outside Mount: Shade and safety device outside window



Position so there is no slack within the loop.

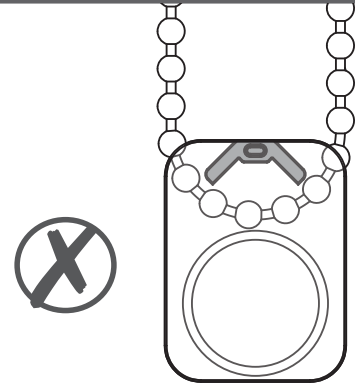


Secure mounting bracket.

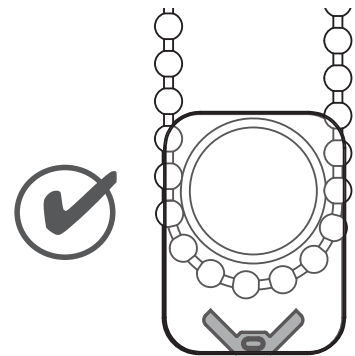


Mount safety device to the mounting bracket.

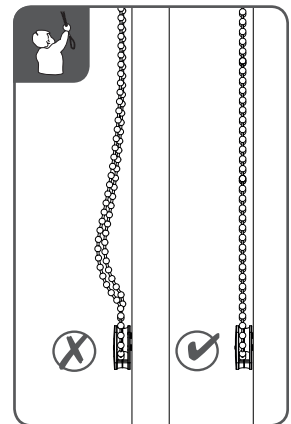
## INSTALLATION TIPS



Shade will not operate if safety device is upside down.



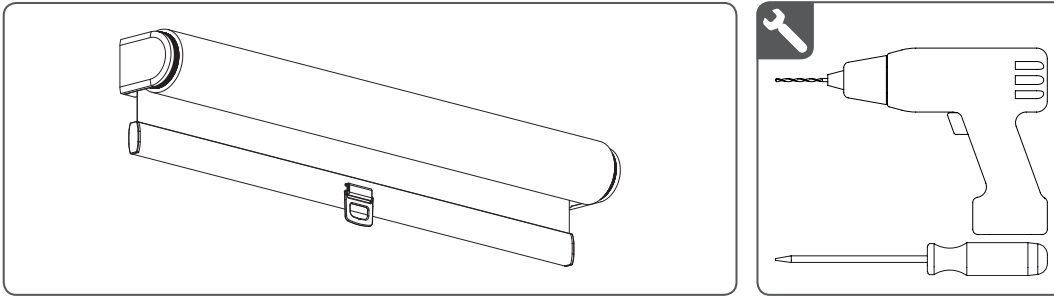
Position the chain side of the safety device before installing.



Install the safety device so there is no slack in the chain loop.

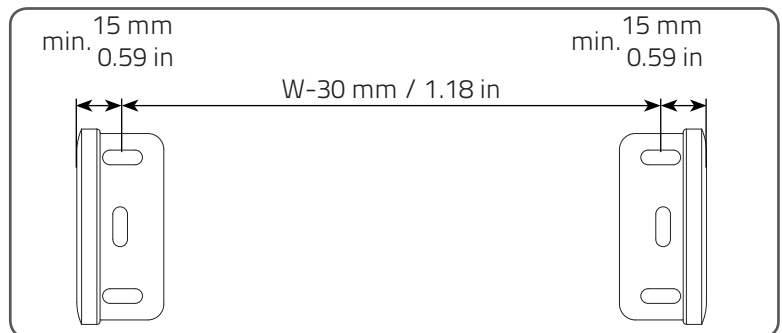
## Installation - Open Roll with Cordless

Read the instructions carefully before assembling and using the product.  
Assembling process can be completed by non-professionals. For indoor use only.



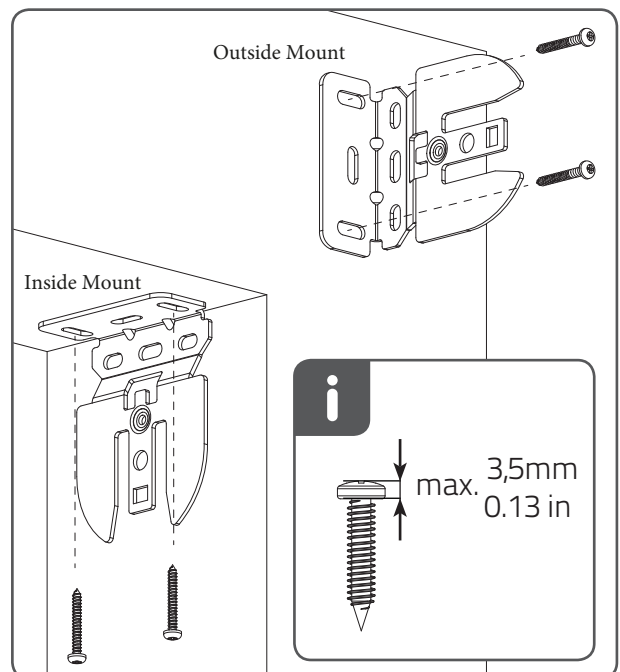
### Step One:

- Use the brackets to mark the screw locations
- On outside mount, make your marks so the distance from the outside edge of the bracket to the outside edge of the other bracket equals your ordered width
- Brackets must be level to each other for the shade to operate properly (for both inside mount and outside mount)



### Step Two:

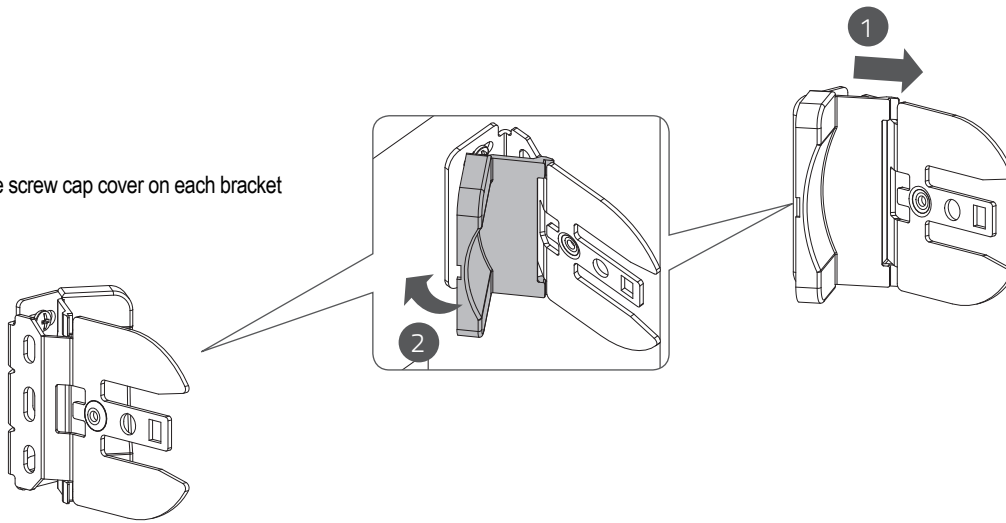
- Recommend you pre-drill the screw holes using a 5/64" drill bit where you marked the screw locations
- Mount the brackets using 2 screws for each bracket



## Installation - Open Roll with Cordless

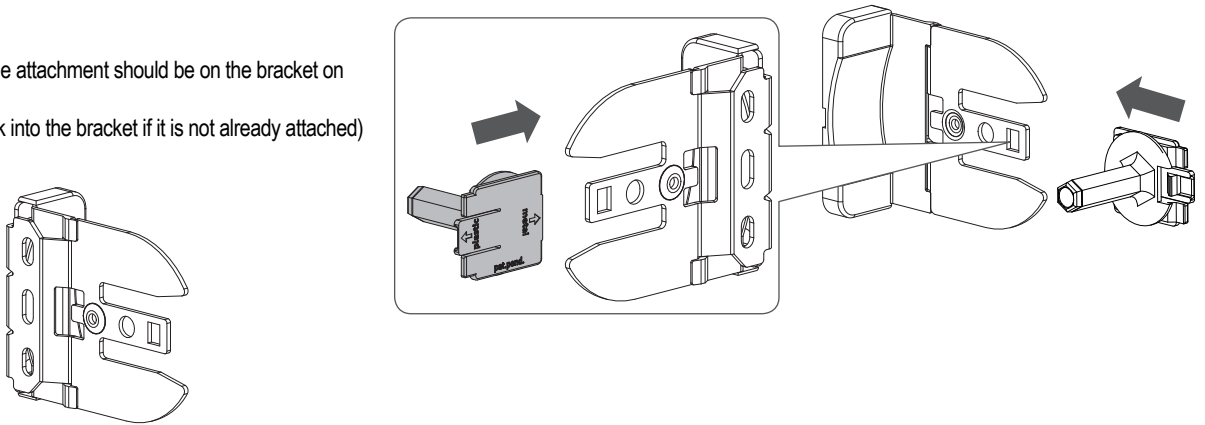
### Step Three:

- Attach the screw cap cover on each bracket



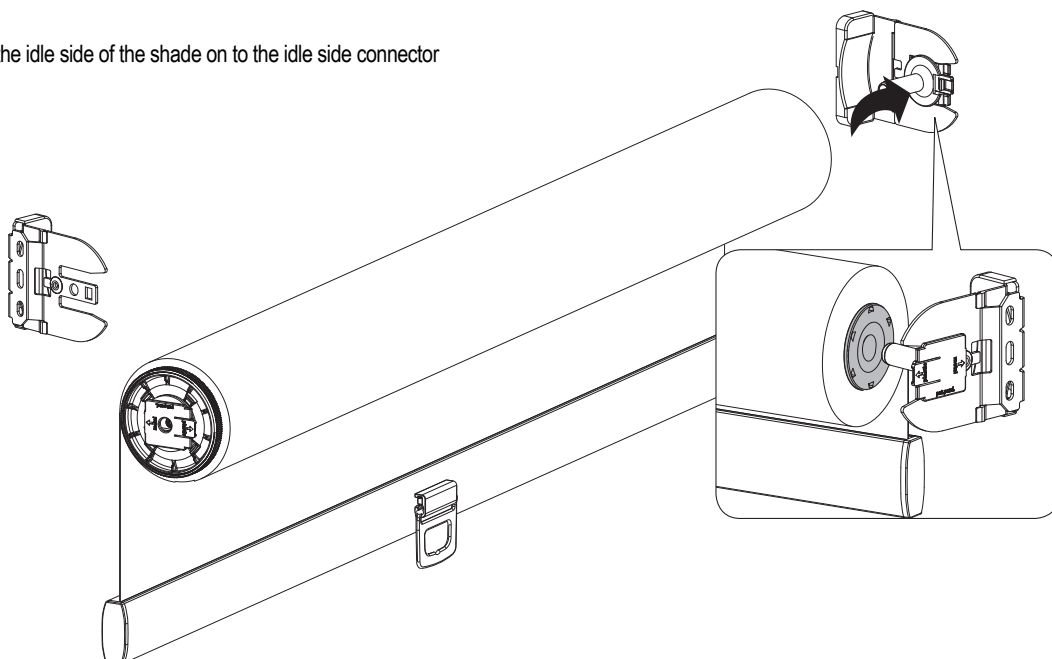
### Step Four:

- The idle side attachment should be on the bracket on the right.  
(simply click into the bracket if it is not already attached)



### Step Five:

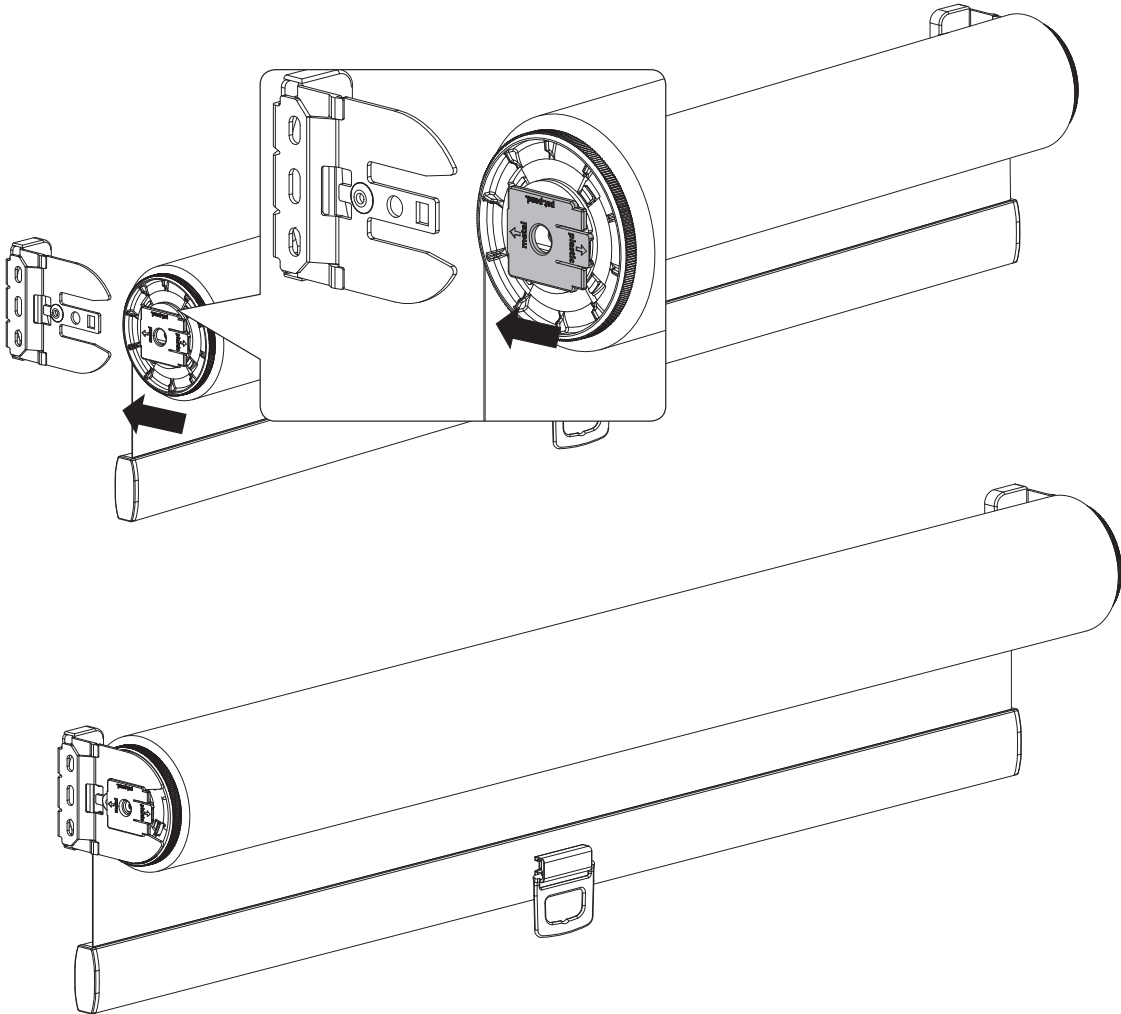
- Slide the idle side of the shade on to the idle side connector



## Installation - Open Roll with Cordless

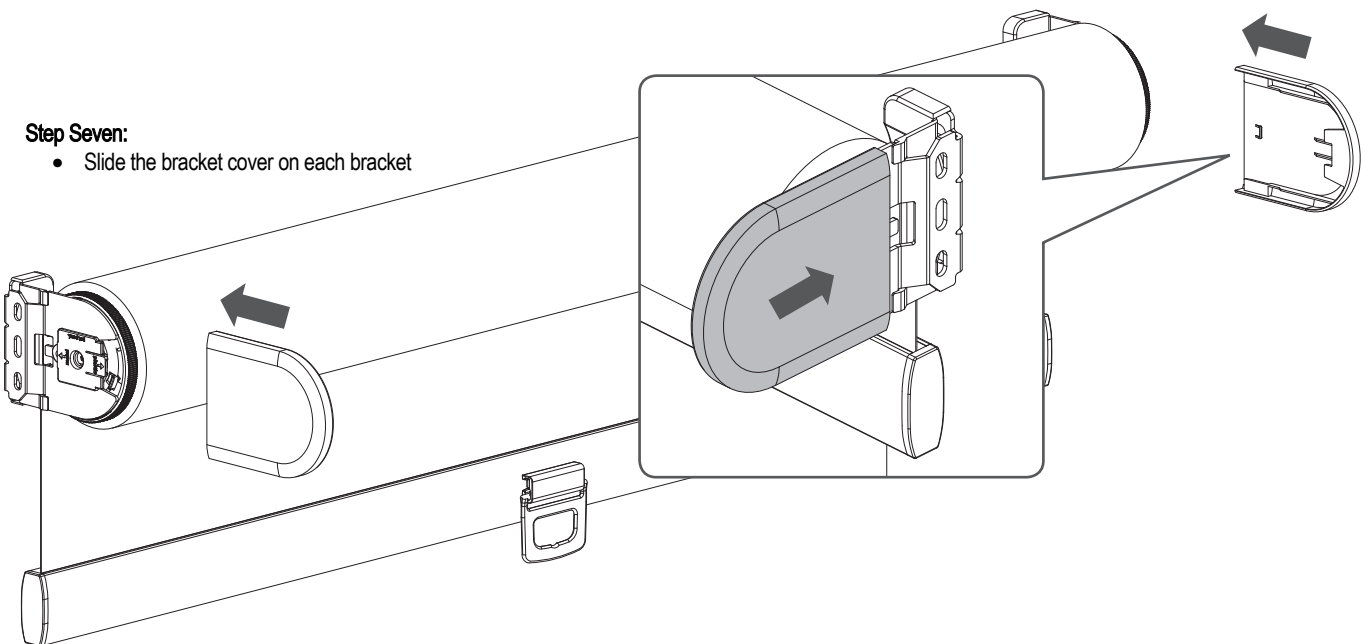
### Step Six:

- Click the limit side of the shade into the bracket



### Step Seven:

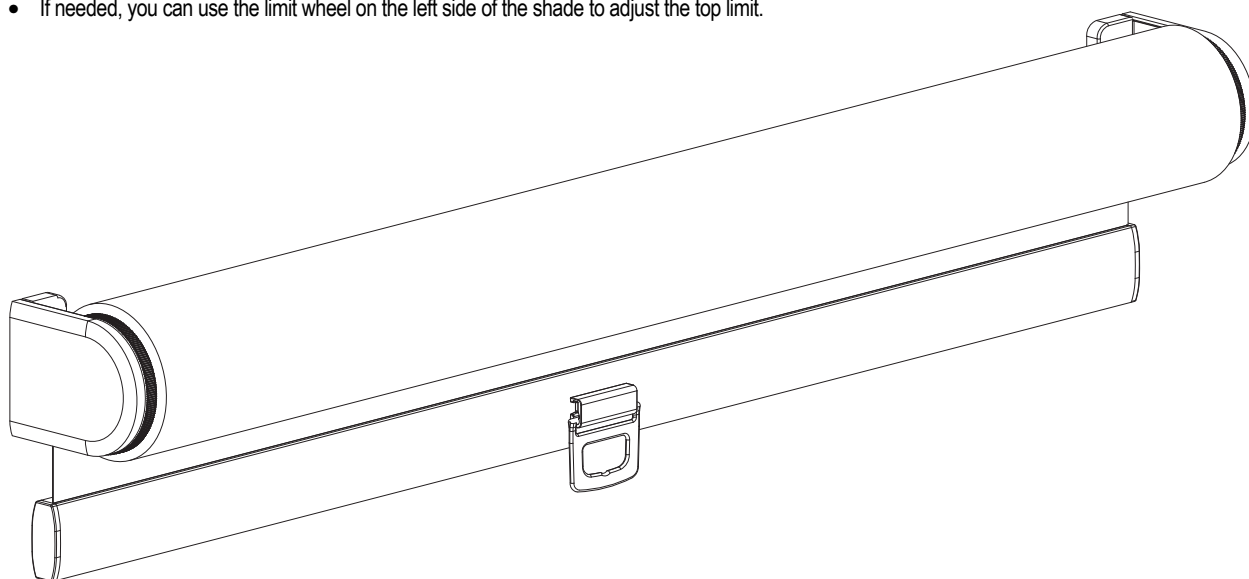
- Slide the bracket cover on each bracket



## Installation - Open Roll with Cordless

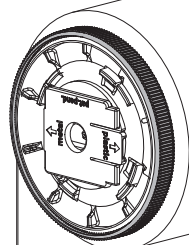
### Final Step:

- If needed, you can use the limit wheel on the left side of the shade to adjust the top limit.

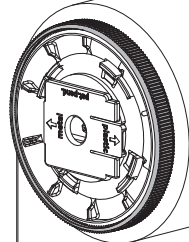


### Adjust top limit

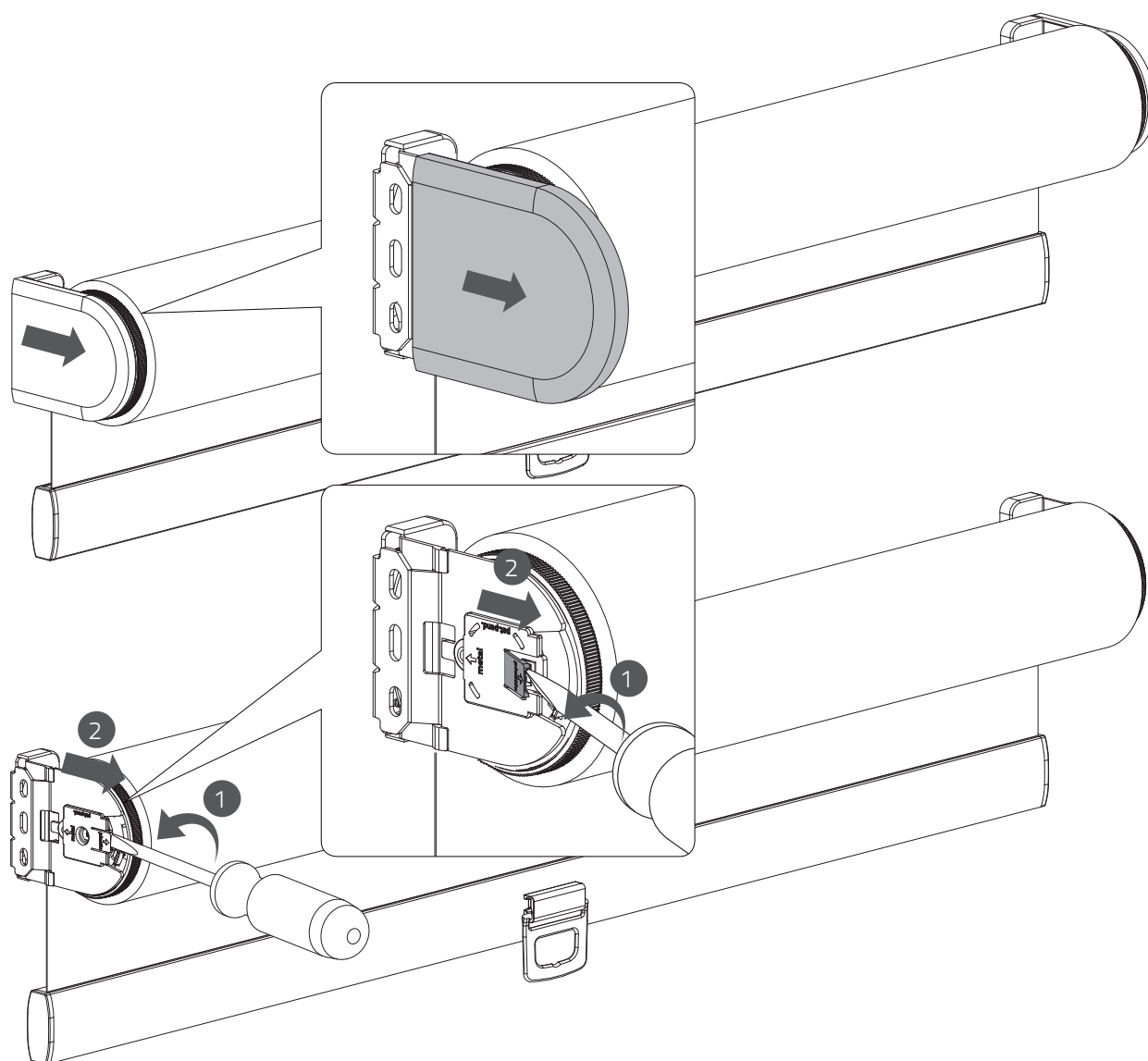
Raise



Lower



## Removal - Open Roll with Cordless



## Installation - Fabric Wrapped Cornice

Read the instructions carefully before assembling and using the product.  
Assembling process can be completed by non-professionals. For indoor use only.

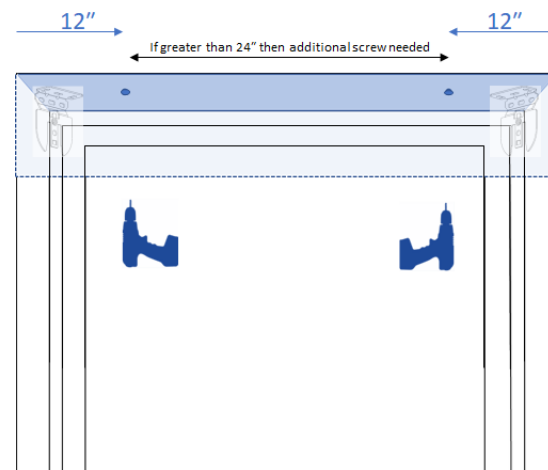
### CORNICE INSTALLATION

#### INSIDE MOUNT

**NOTE:**

The brackets for your shade will come installed on the cornice (if the cornice and shade are ordered together).  
Install cornice before installing the shade.

1. Hold the cornice to the top of your window frame and set it back until it is flush with your wall or until it is touching the back of the window opening. Be sure the cornice is centered in the opening.
2. Predrill holes through the cornice for your screws:
  - a. 12" maximum from each side
  - b. Space between screws should not exceed 24"
3. Secure your cornice to the window by screwing through each hole you predrilled.
4. Once the cornice is mounted, you can then install the shade.



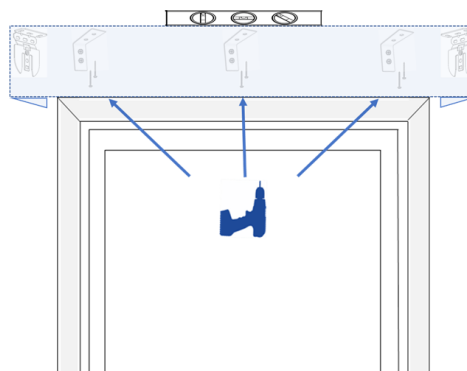
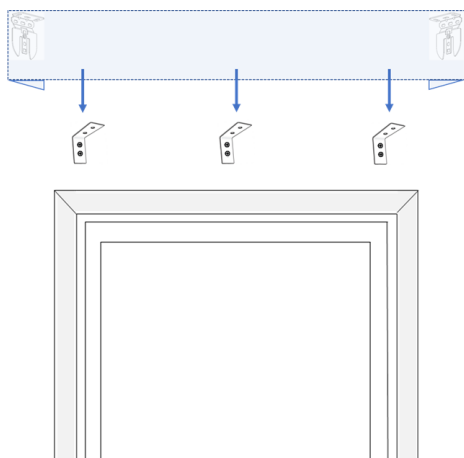
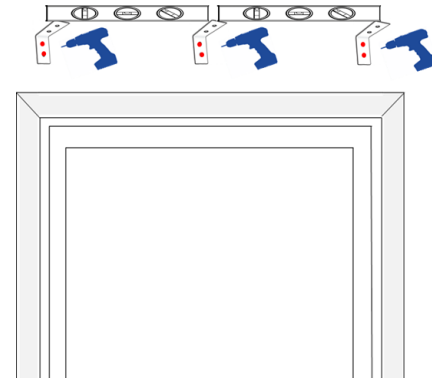
### CORNICE INSTALLATION

#### OUTSIDE MOUNT

**NOTE:**

The brackets for your shade will come installed on the cornice (if the cornice and shade are ordered together).  
Install cornice before installing the shade.

1. Make sure the surface you intend to install your cornice hardware is sturdy enough to support the brackets. You will need to screw into wood studs that are strong enough to securely bond with the included screws or you will need to use fasteners to securely support the brackets. Please note secure fasteners are not included.
2. Center the cornice over the window opening at your desired height. Mark the position of the ends of the cornice on the wall. Measure in 6" from each end and using the cornice bracket mark the screw holes with a pencil. If you have additional cornice brackets, space them evenly between the outer brackets. Make sure all the mounting brackets are level with one another.
3. Pre-drill the holes for each cornice bracket and then secure the brackets to your mounting surface.
4. Place the cornice on top of the brackets and center it to the window. Check again that the cornice is level. Hold the cornice in place and screw through the top of each bracket into the cornice.
5. Once the cornice is secured to each bracket, then you can install the shade.



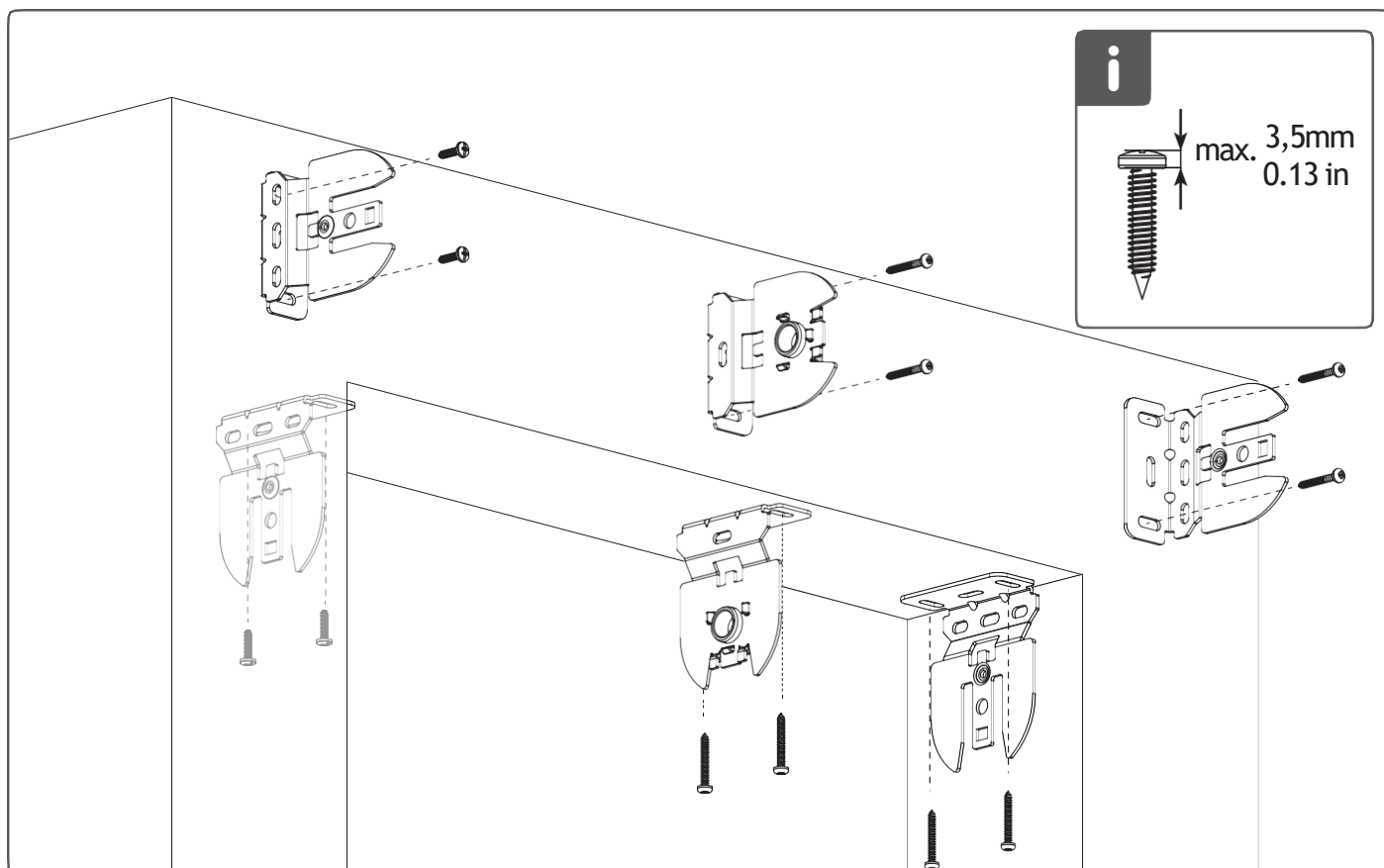
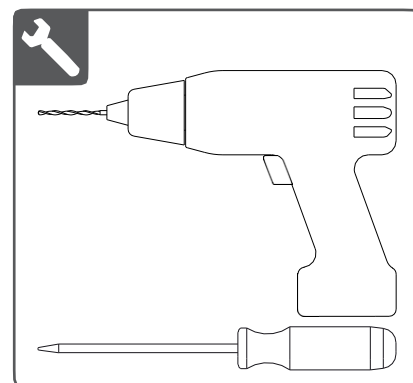
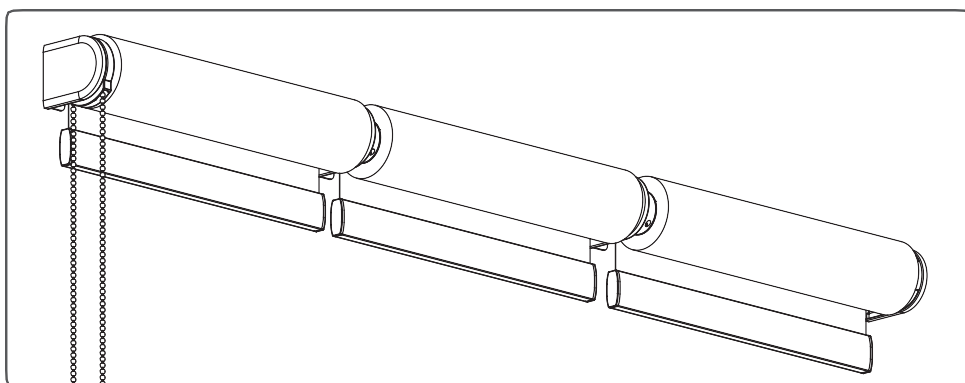
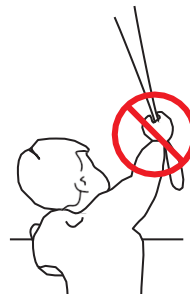


## Installation - Intermediate Brackets

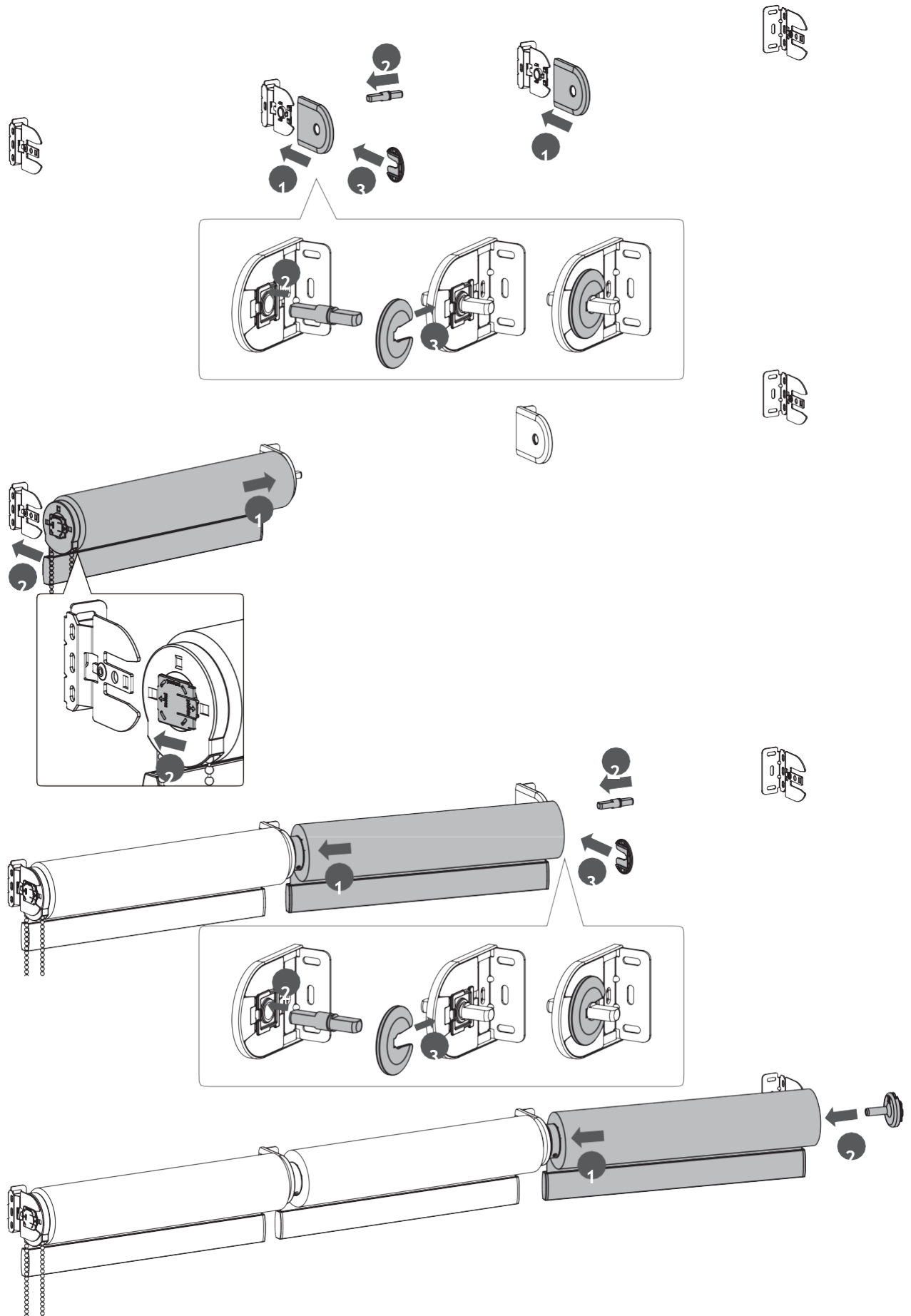
Read the instructions carefully before assembling and using the product.  
Assembling process can be completed by non-professionals. For indoor use only.

### WARNING

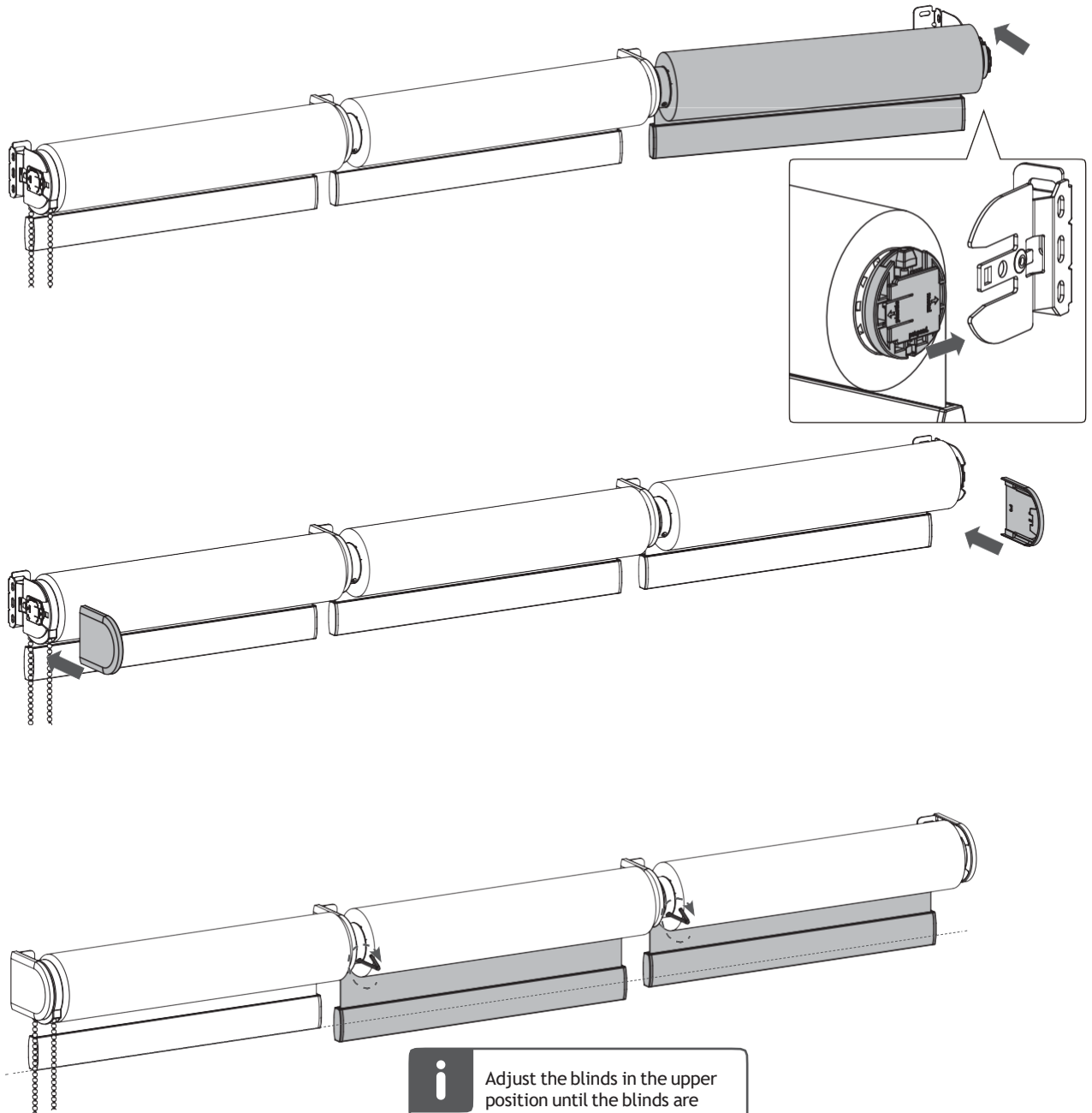
- Young children can strangle in the loop of pull cords, chains and tapes, and cords that operate window coverings.
  - To avoid strangulation and entanglement, keep cords out of the reach of young children. Cords may become wrapped around a child's neck.
  - Move beds, cots and furniture away from window covering cords.
  - Do not tie cords together.
- Make sure cords do not twist together and form a loop.



# Installation - Intermediate Brackets



## Installation - Intermediate Brackets



Adjust the blinds in the upper position until the blinds are aligned.

### **WARNING**

Install the child safety device as specified in the childsafe manual.

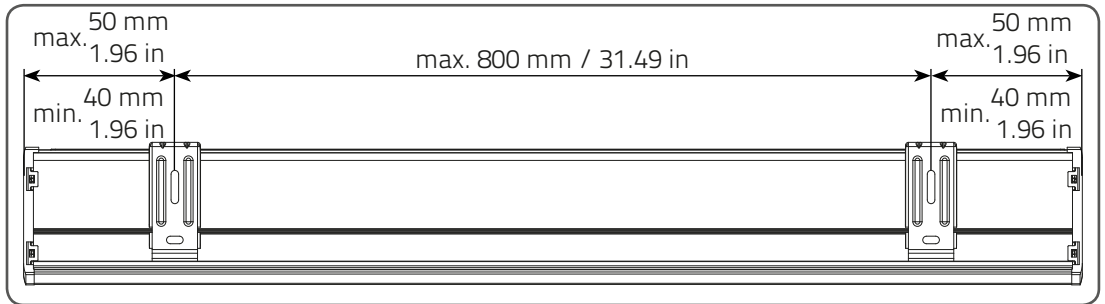
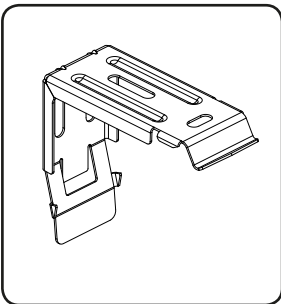
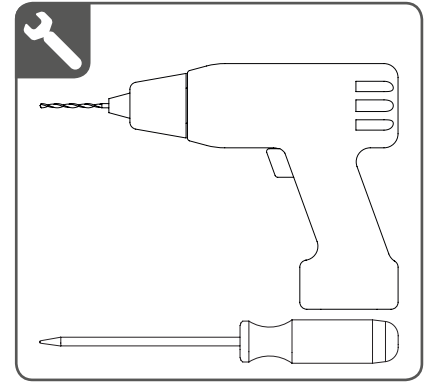
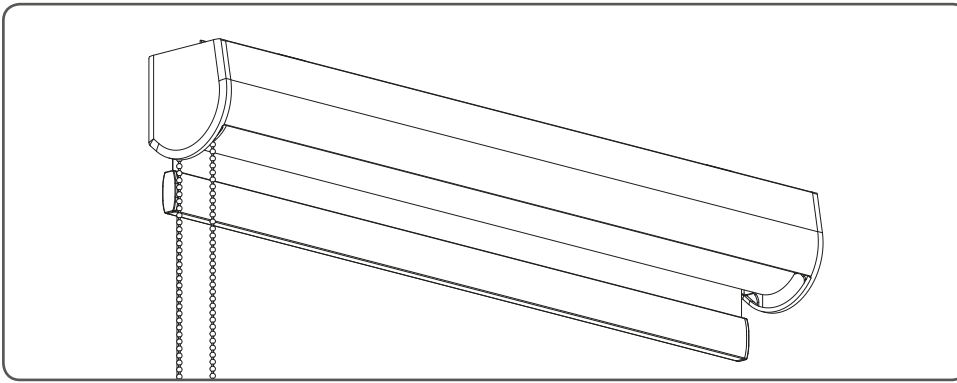
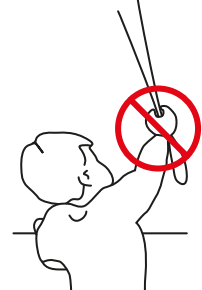


## Installation - Semi-Open Cassette with Continuous Chain

Read the instructions carefully before assembling and using the product. Assembling process can be completed by non-professionals. For indoor use only.

### WARNING

- Young children can strangle in the loop of pull cords, chains and tapes, and cords that operate window coverings.
- To avoid strangulation and entanglement, keep cords out of the reach of young children. Cords may become wrapped around a child's neck
- Move beds, cots and furniture away from window covering cords.
- Do not tie cords together.  
Make sure cords do not twist together and form a loop.



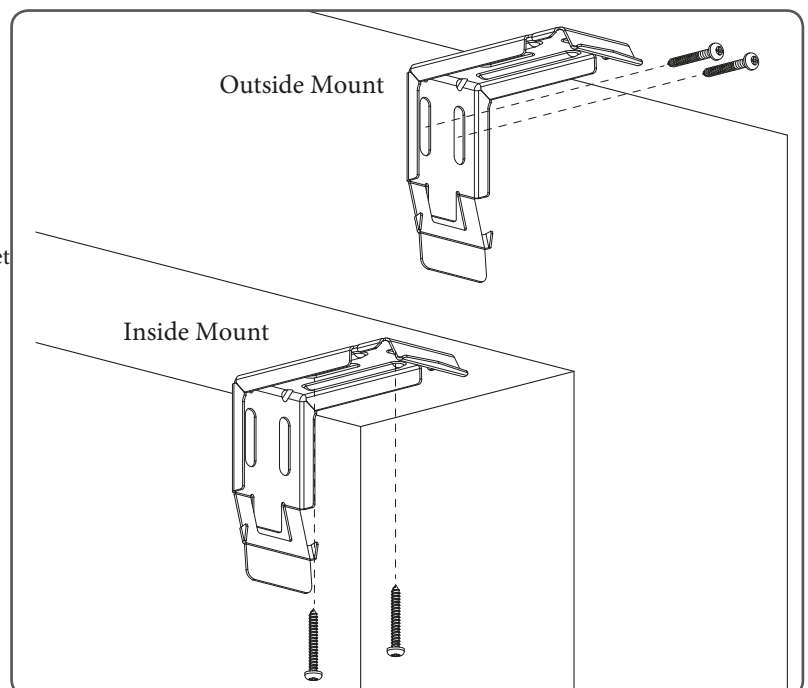
#### Step One:

- Use the brackets to mark the screw locations

#### Step Two:

- Mount the brackets using 2 screws for each bracket
- For outside mount screw through the backside of the bracket
- On inside mount screw through the top of the bracket

Note: Brackets must be level to avoid the fabric telescoping to one side which can damage the fabric.

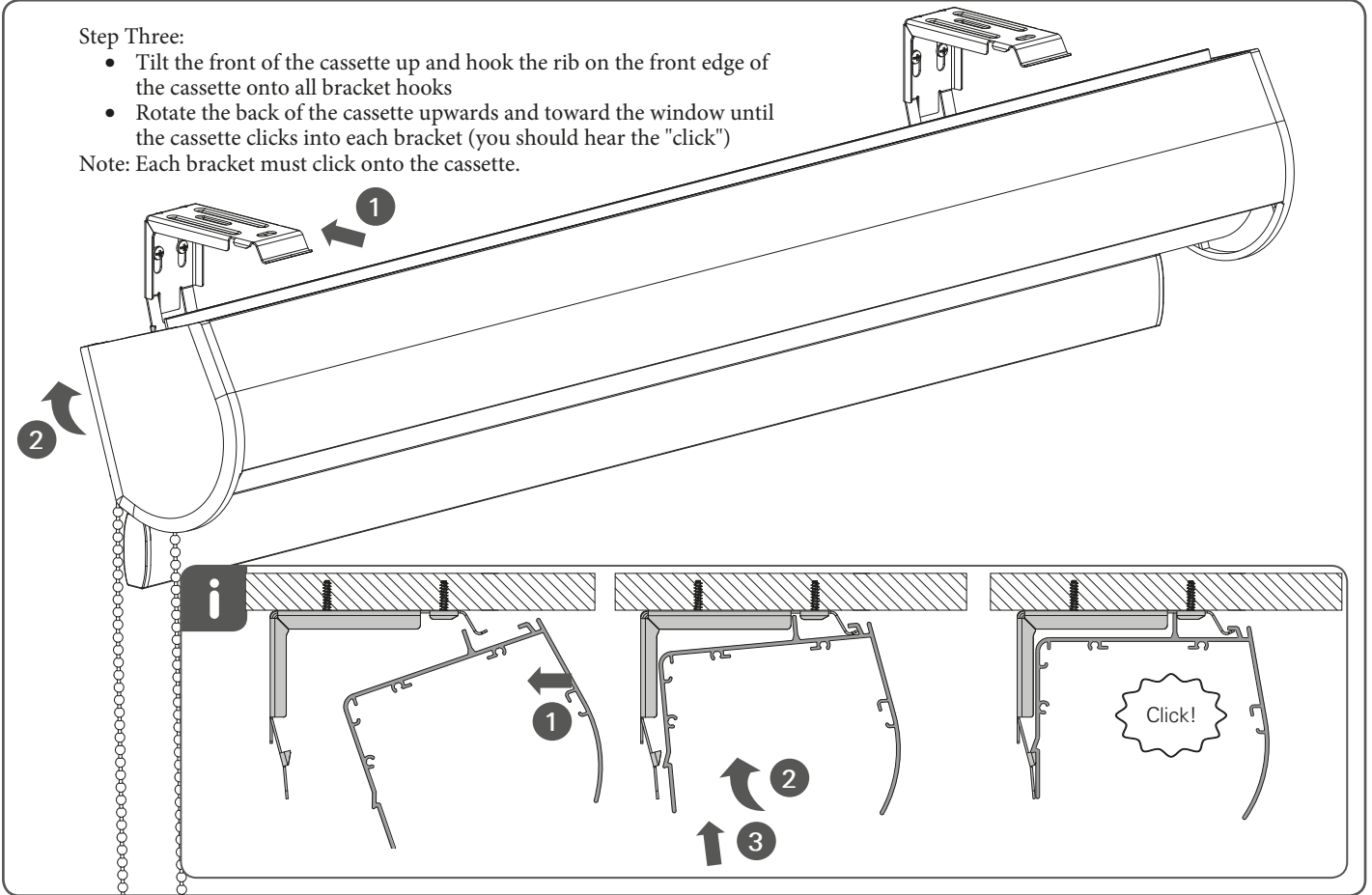


## Installation - Semi-Open Cassette with Continuous Chain

### Step Three:

- Tilt the front of the cassette up and hook the rib on the front edge of the cassette onto all bracket hooks
- Rotate the back of the cassette upwards and toward the window until the cassette clicks into each bracket (you should hear the "click")

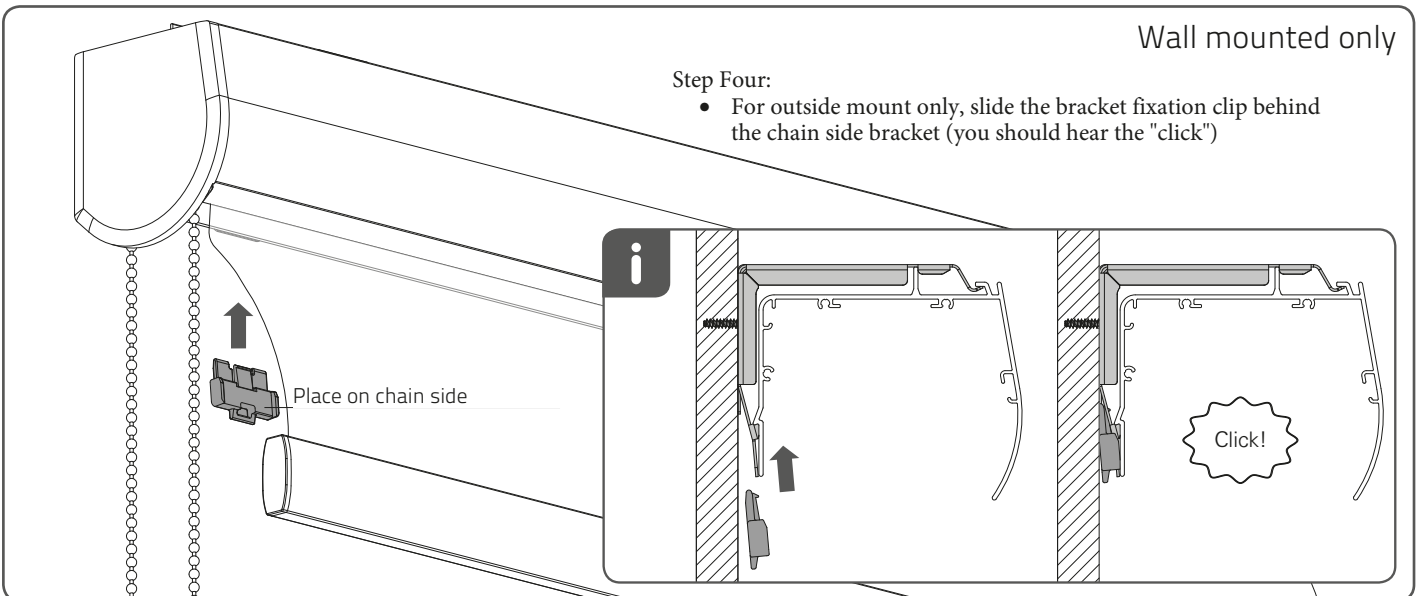
Note: Each bracket must click onto the cassette.



### Wall mounted only

#### Step Four:

- For outside mount only, slide the bracket fixation clip behind the chain side bracket (you should hear the "click")



## **! WARNING**

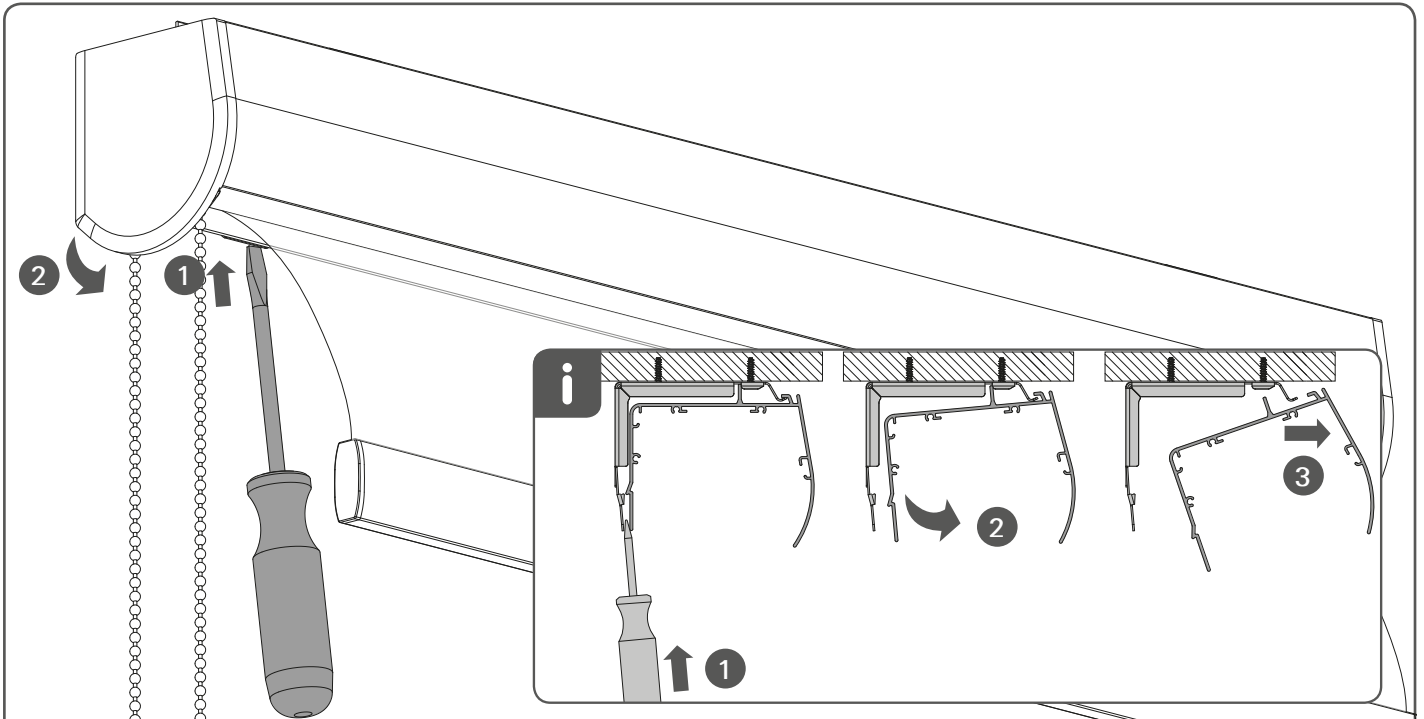
Install the child safety device as specified in the childsafe manual.



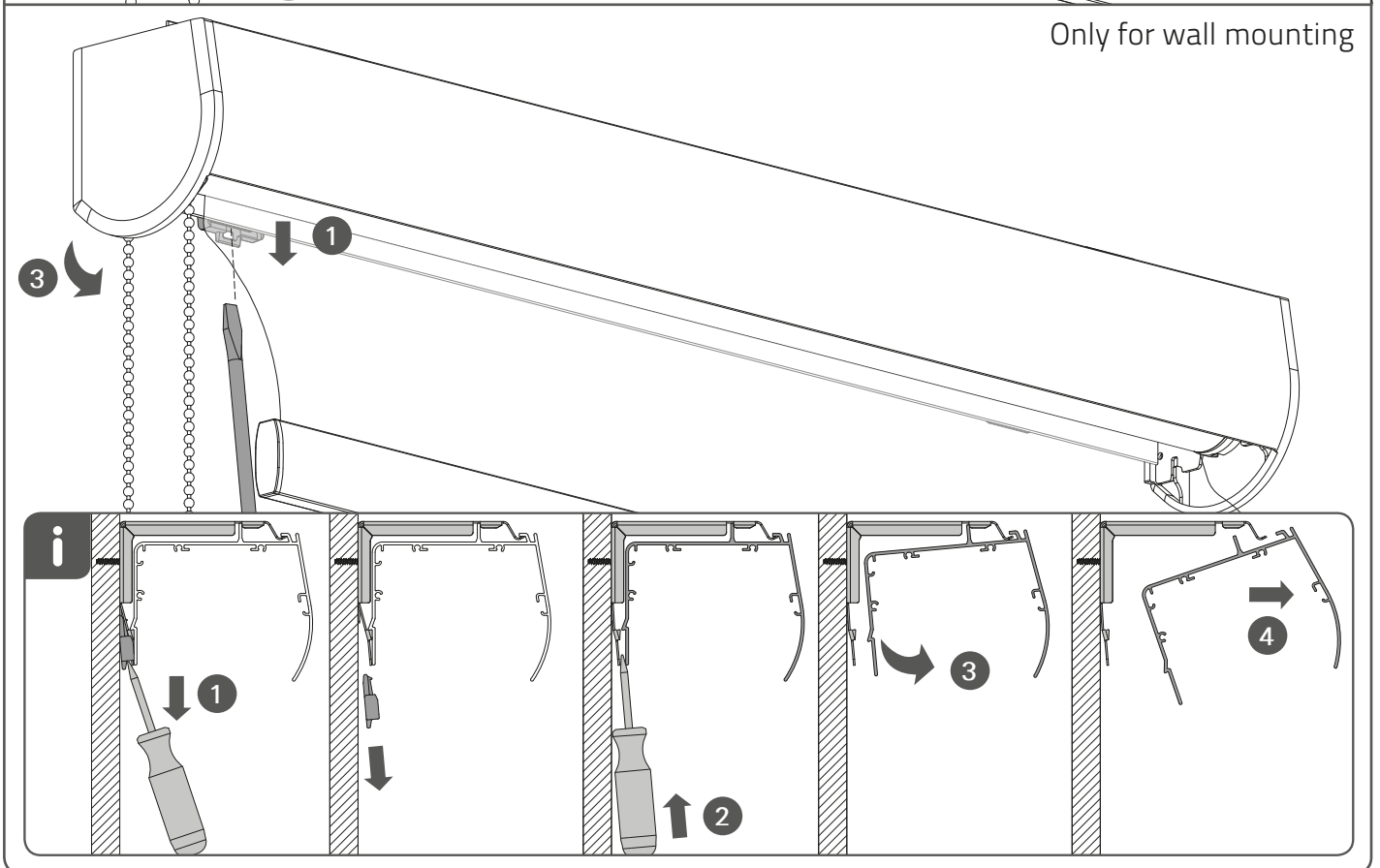
#### Final Step:

- Install the child safety device

## Removal - Semi-Open Cassette with Continuous Chain

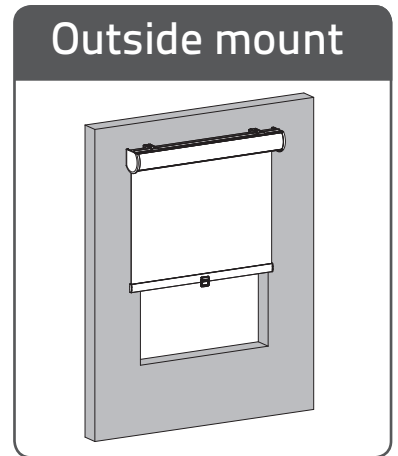
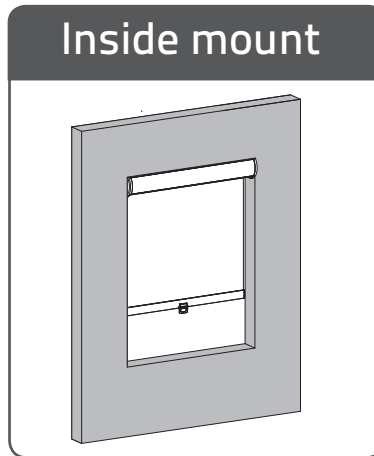
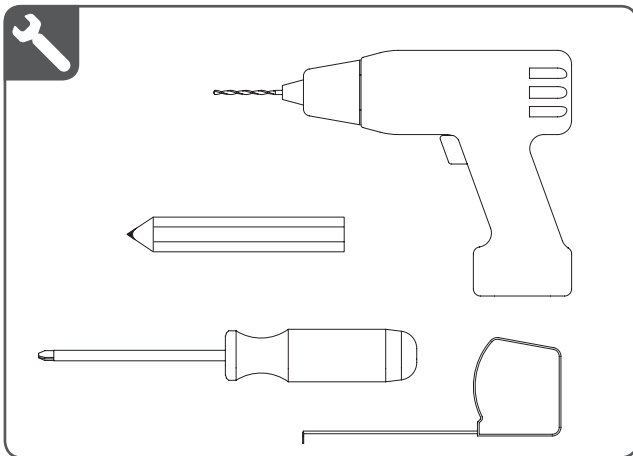
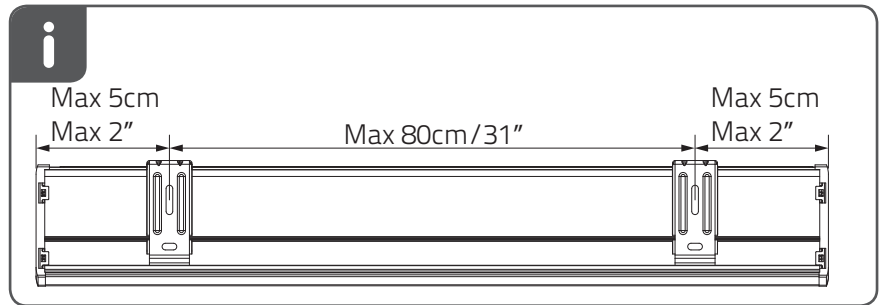
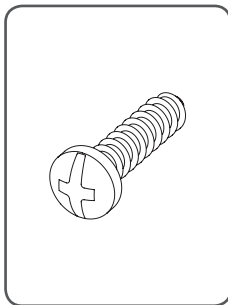
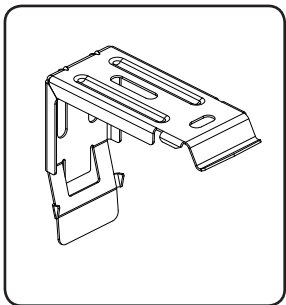
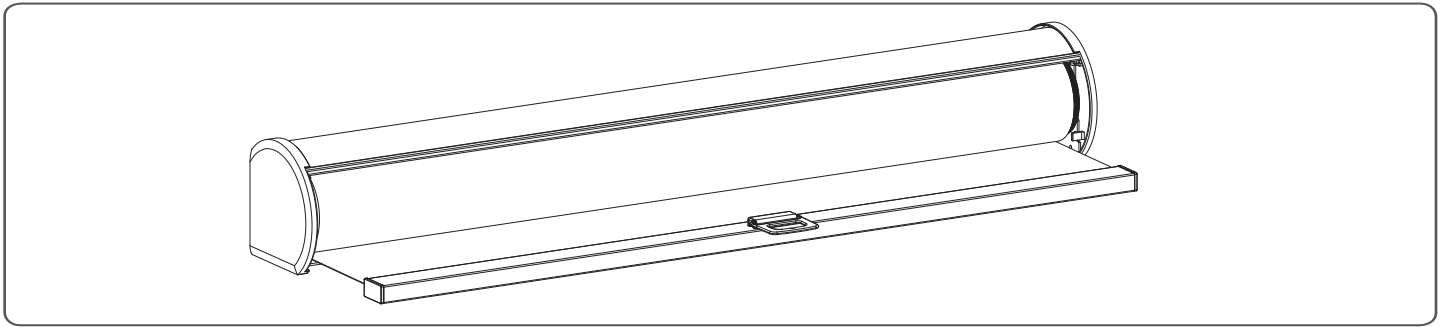


Only for wall mounting



## Installation - Semi-Open Cassette with Cordless

Read the instructions carefully before assembling and using the product. Assembling process can be completed by non-professionals. For indoor use only.



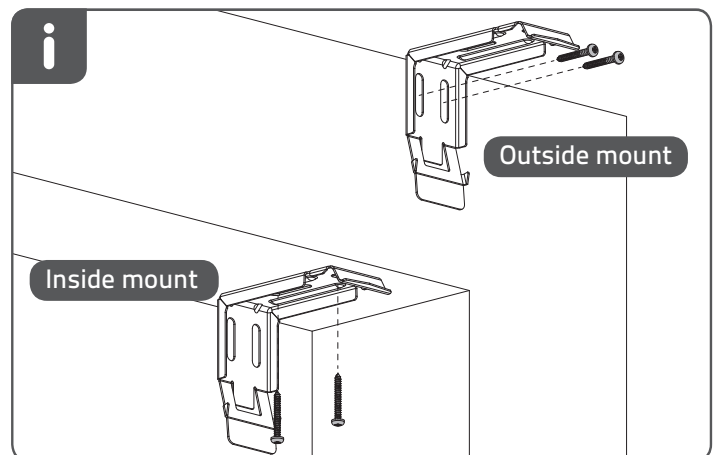
### Step One:

- Use the brackets to mark the screw locations

### Step Two:

- Mount the brackets using 2 screws for each bracket.
- For outside mount screw through the backside of the bracket.
- On inside mount screw through the top of the bracket

Note: Brackets must be level to avoid the fabric telescoping to one side which can damage the fabric.

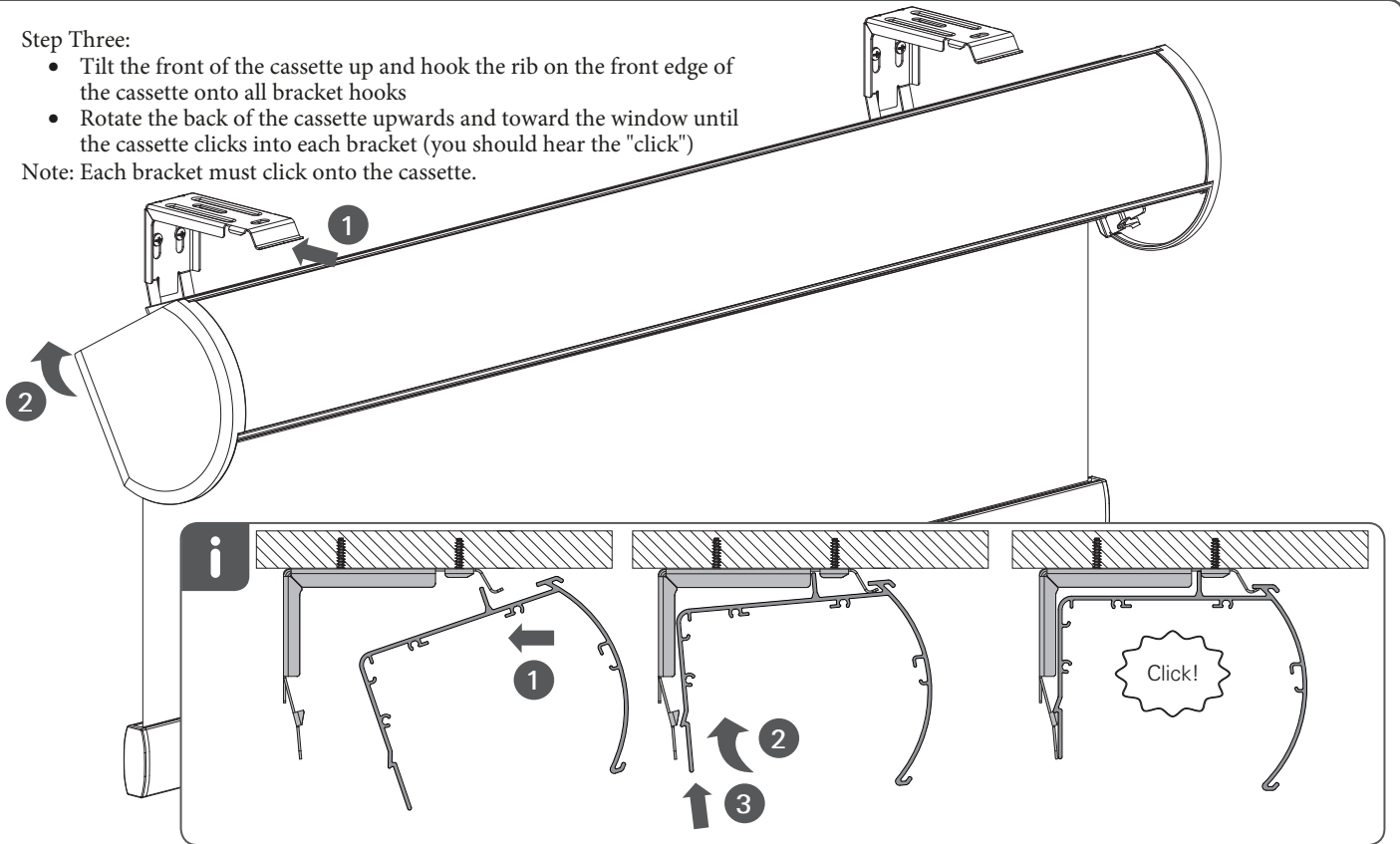


## Installation - Semi-Open Cassette with Cordless

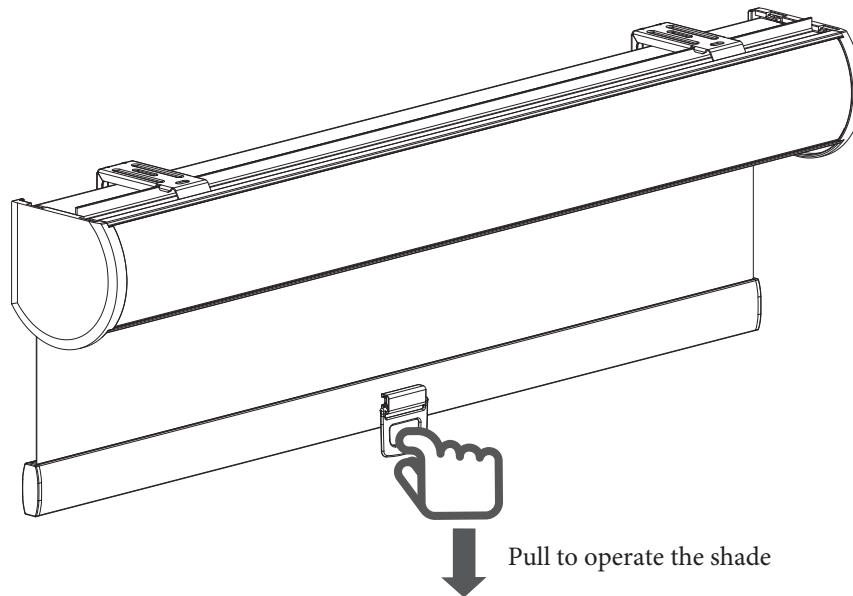
### Step Three:

- Tilt the front of the cassette up and hook the rib on the front edge of the cassette onto all bracket hooks
- Rotate the back of the cassette upwards and toward the window until the cassette clicks into each bracket (you should hear the "click")

Note: Each bracket must click onto the cassette.

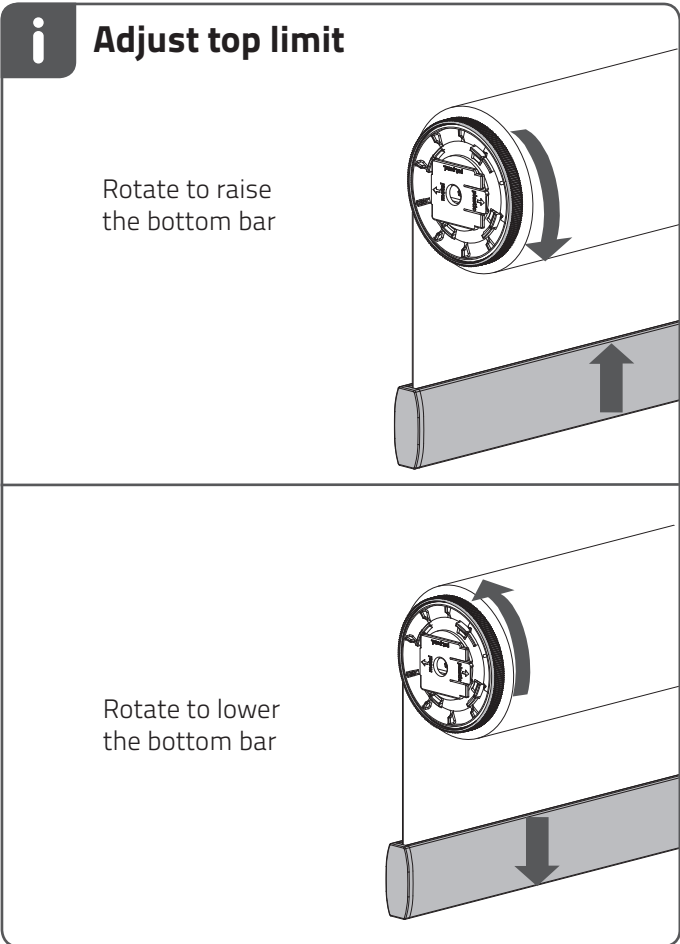


## Operation

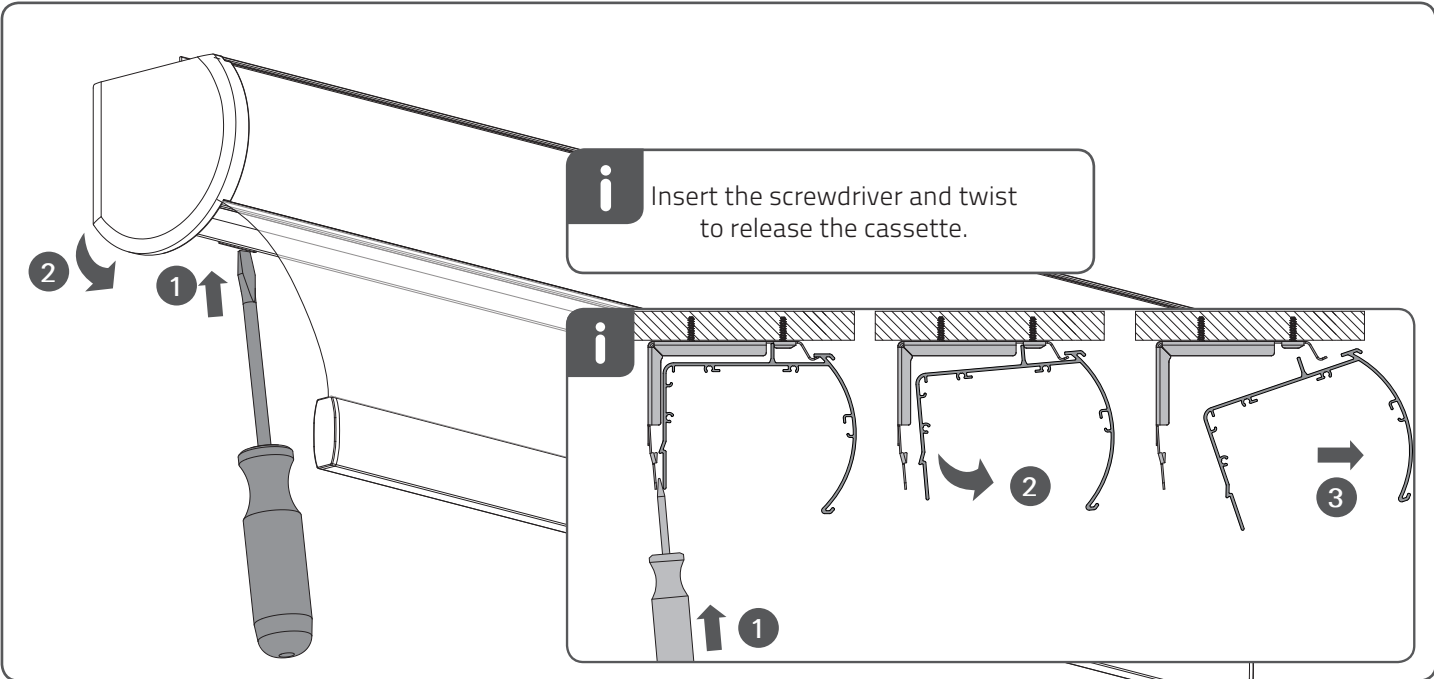




## Installation - Semi-Open Cassette with Cordless



## Removal

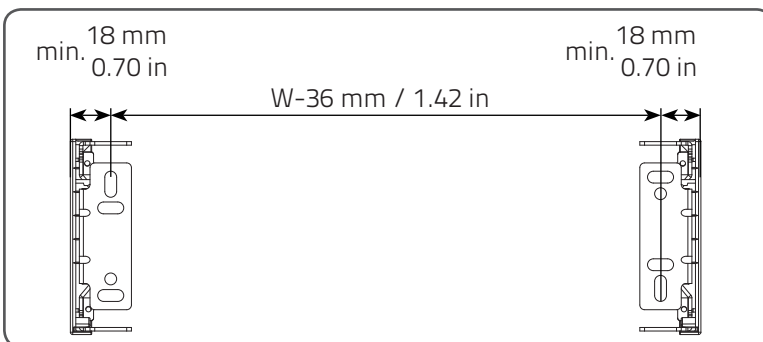
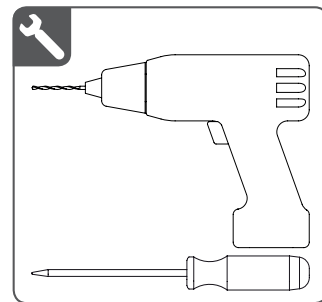
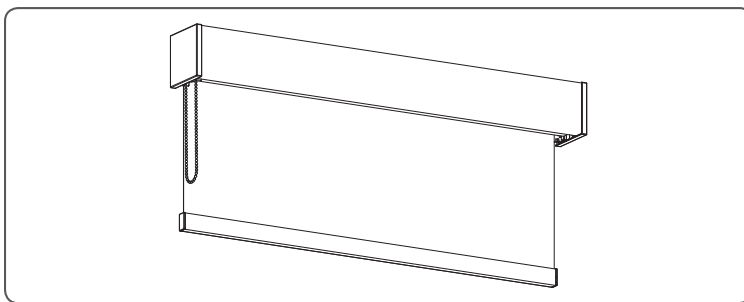
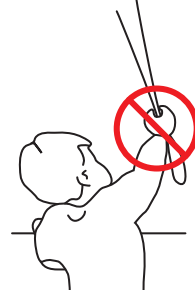


## Installation - Fascia with Continuous Chain

Read the instructions carefully before assembling and using the product.  
Assembling process can be completed by non-professionals. For indoor use only.

### WARNING

- Young children can strangle in the loop of pull cords, chains and tapes, and cords that operate window coverings.
- To avoid strangulation and entanglement, keep cords out of the reach of young children. Cords may become wrapped around a child's neck
- Move beds, cots and furniture away from window covering cords.
- Do not tie cords together.  
Make sure cords do not twist together and form a loop.



#### Step One:

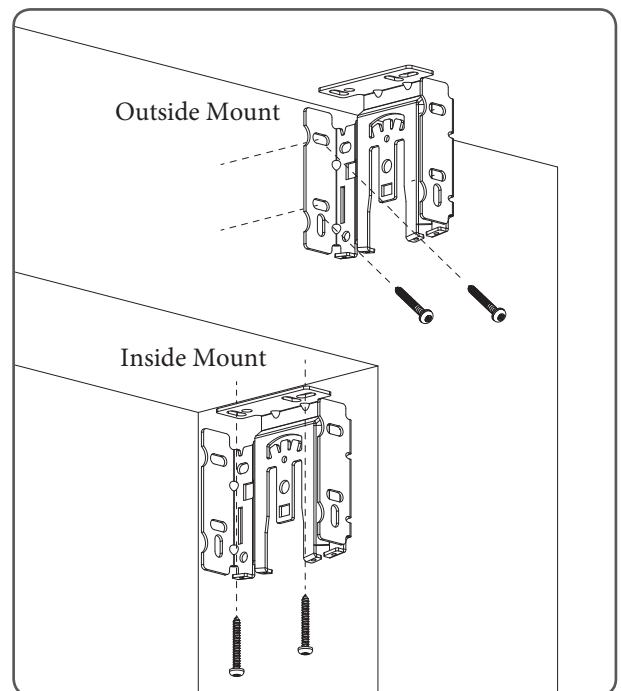
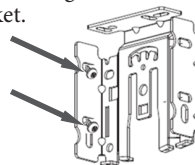
- Use the brackets to mark the screw locations
- On outside mount, make your marks so the distance from the outside edge of the bracket to the outside edge of the other bracket equals your ordered width

Note: Brackets must be level to each other for the shade to operate properly (for both inside mount and outside mount)

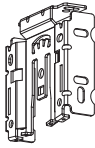
#### Step Two:

- Recommend you pre-drill the screw holes using a 5/64" drill bit where you marked the screw locations
- Mount the brackets using 2 screws for each bracket

Note: On outside mount, the screws will be installed on an angle. This is normal and the screws may not be flat against the bracket.

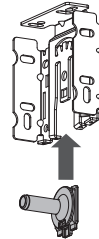


## Installation - Fascia with Continuous Chain



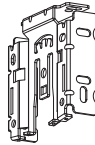
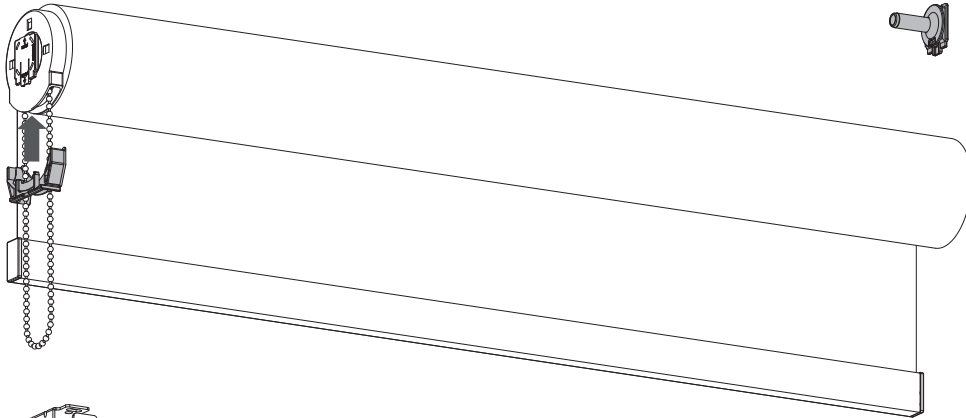
### Step Three:

- The idle side attachment should be on the opposite side of the chain (simply click into the bracket if it is not already attached)



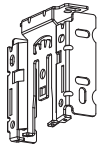
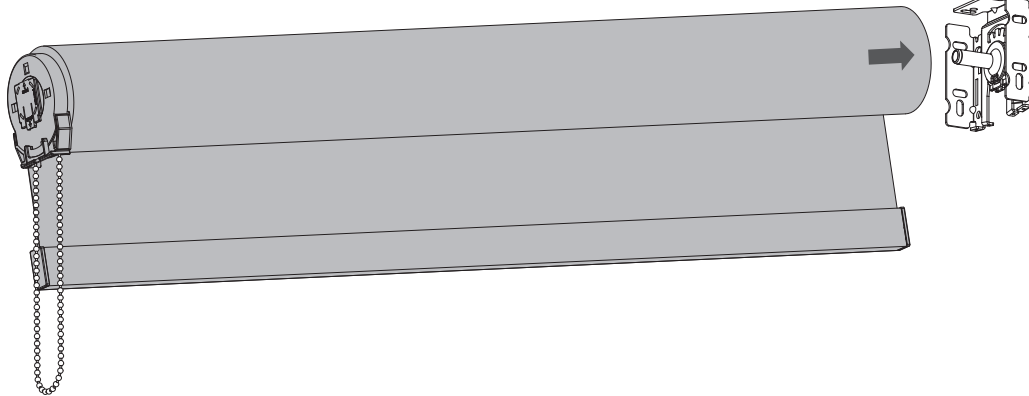
### Step Four:

- Slide the chain guide onto the clutch



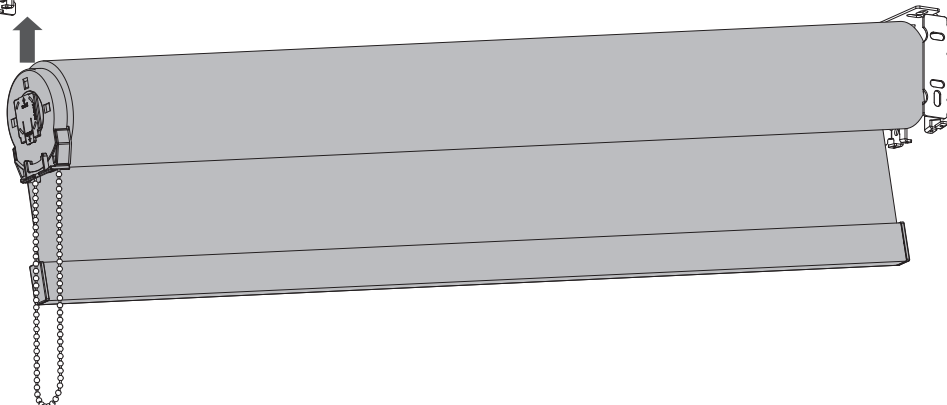
### Step Five:

- Slide the idle side of the shade on to the idle side connector



### Step Six:

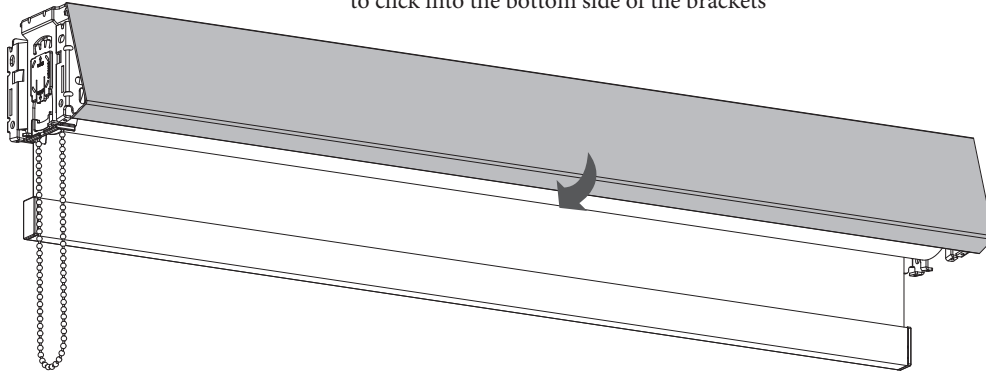
- Click the control side of the shade the bracket



## Installation - Fascia with Continuous Chain

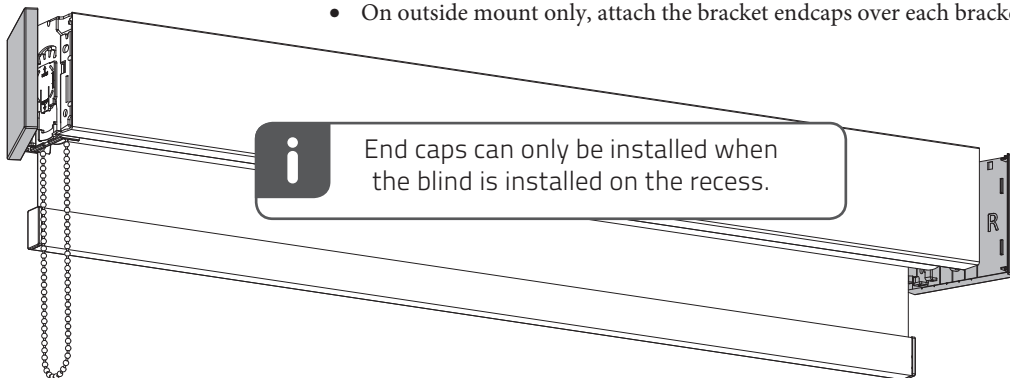
### Step Seven:

- Connect the fascia to the top of the brackets and rotate it down to click into the bottom side of the brackets



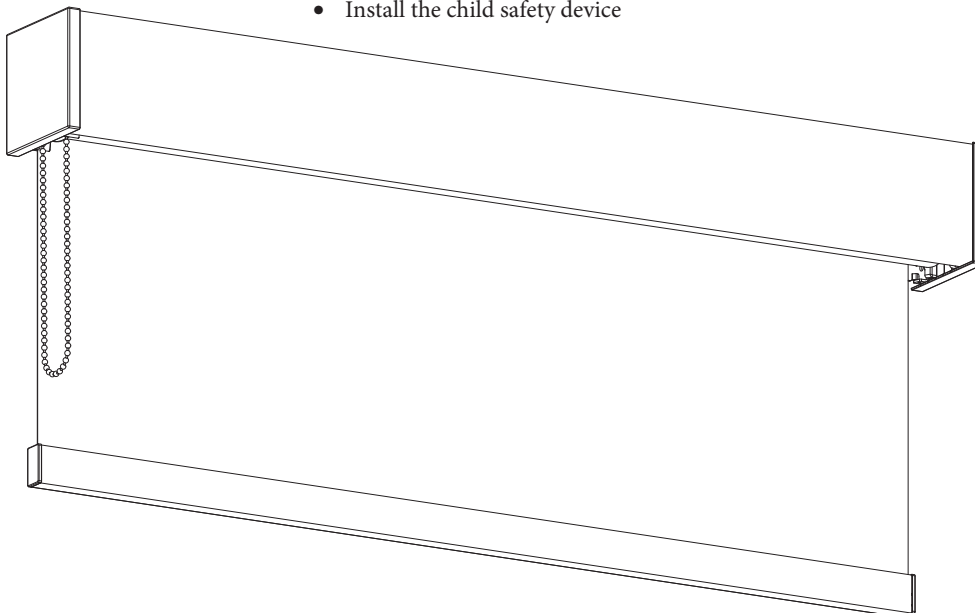
### Step Eight:

- On outside mount only, attach the bracket endcaps over each bracket



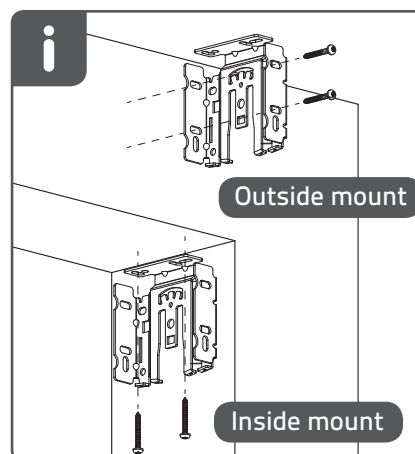
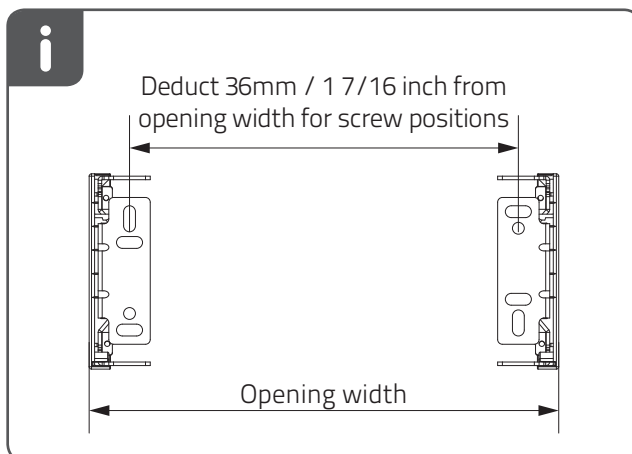
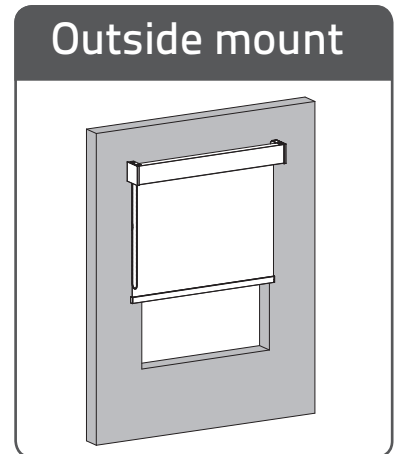
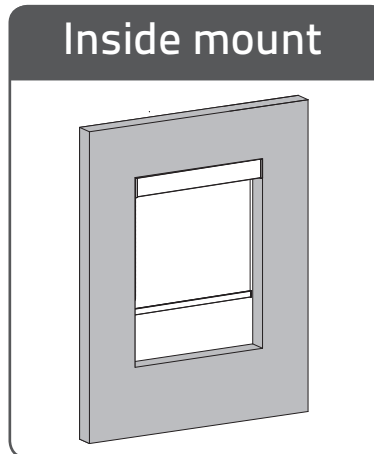
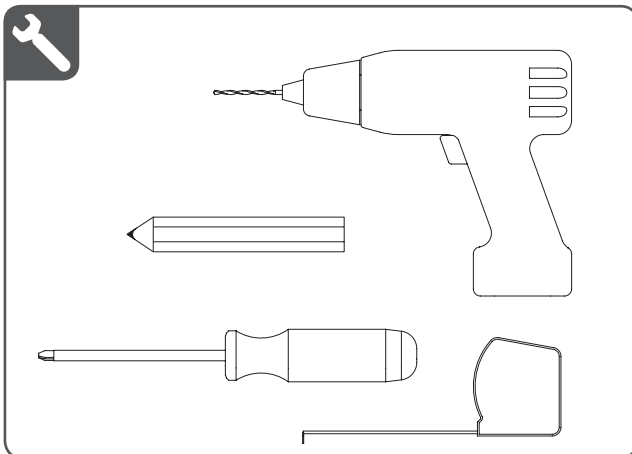
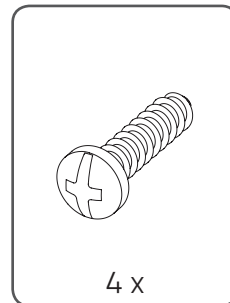
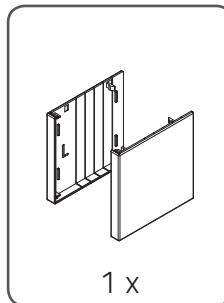
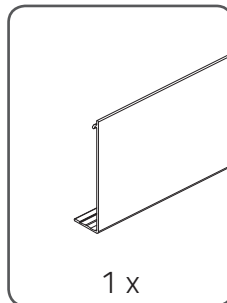
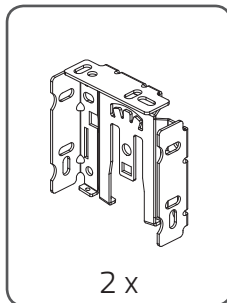
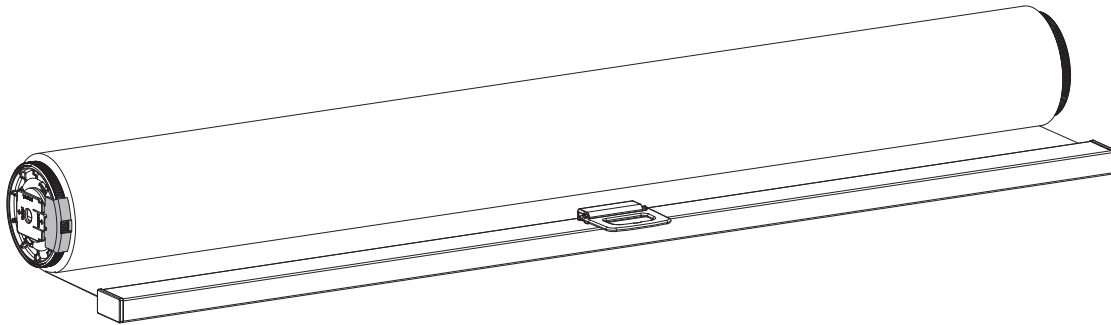
### Final Step:

- Install the child safety device

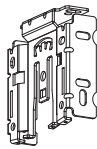


## Installation - Fascia with Cordless

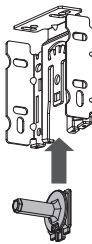
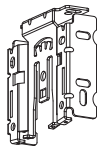
Read the instructions carefully before assembling and using the product.  
Assembling process can be completed by non-professionals. For indoor use only.



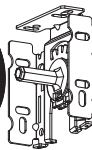
1



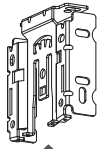
2



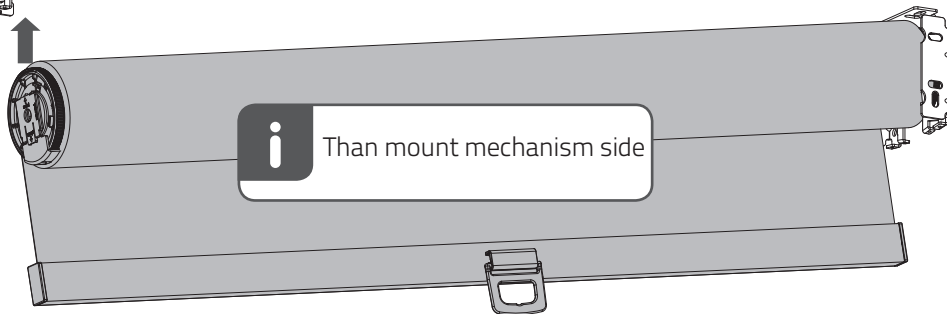
First mount pin side



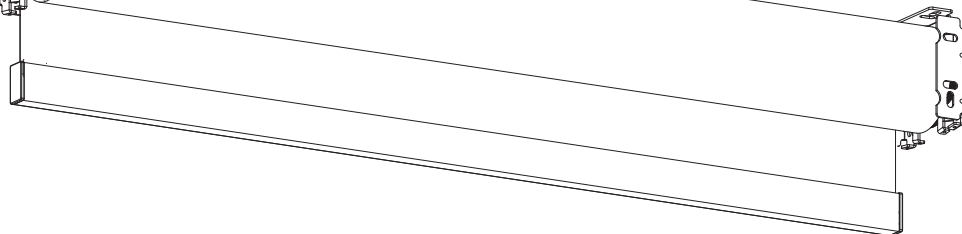
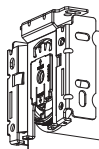
3



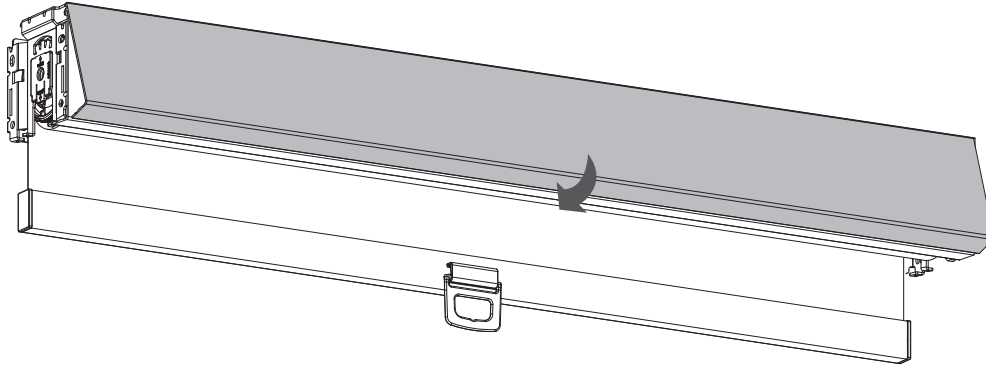
Then mount mechanism side



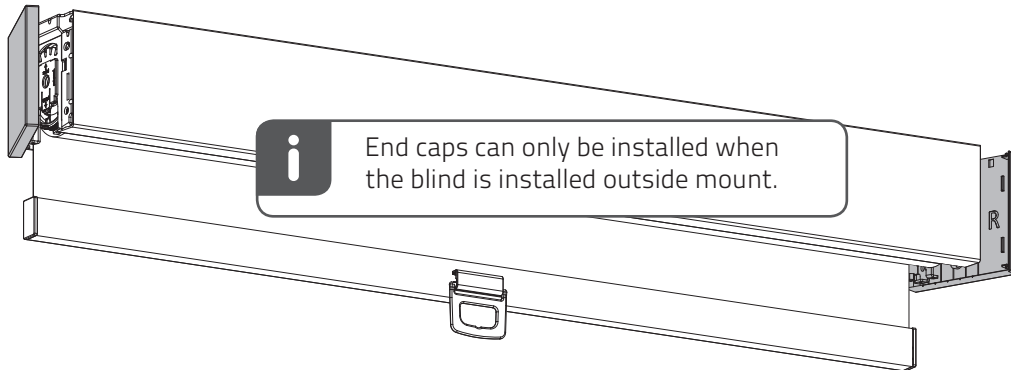
4



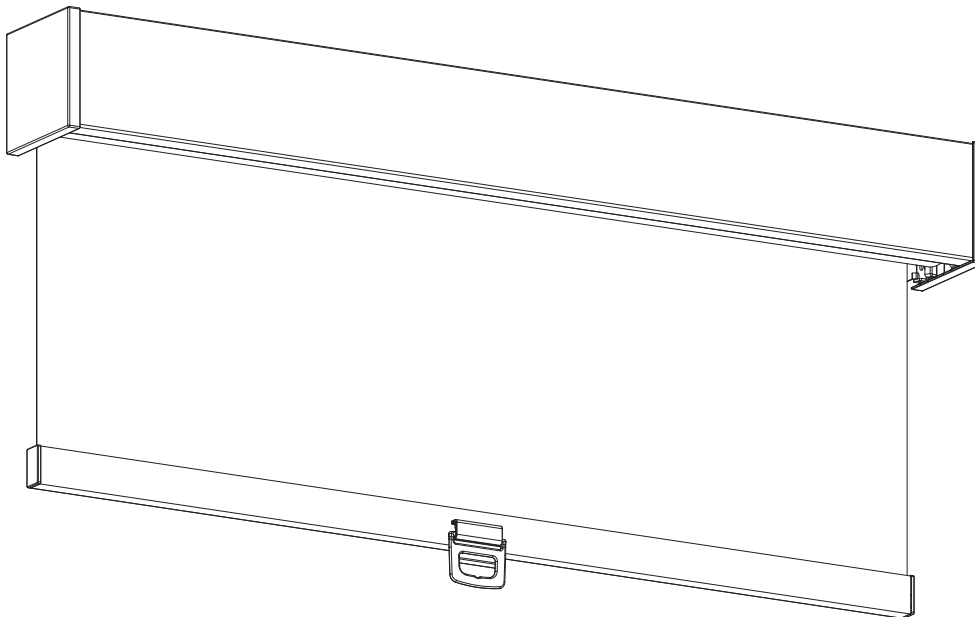
5



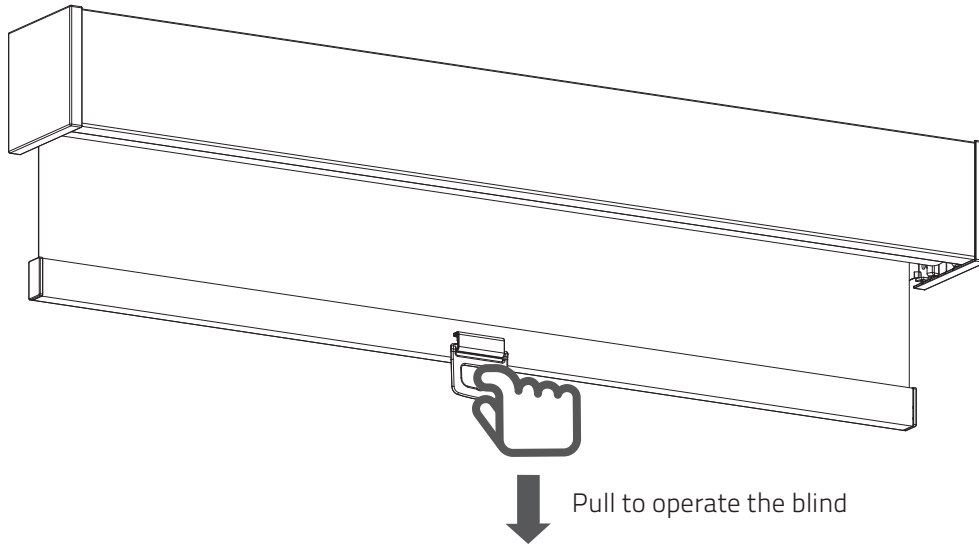
6



7

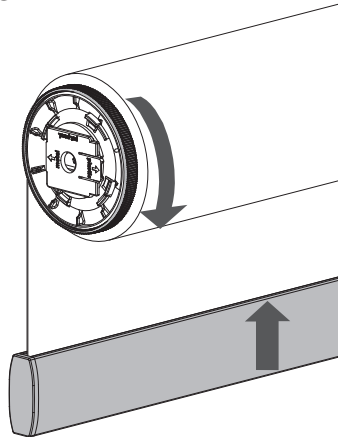


8

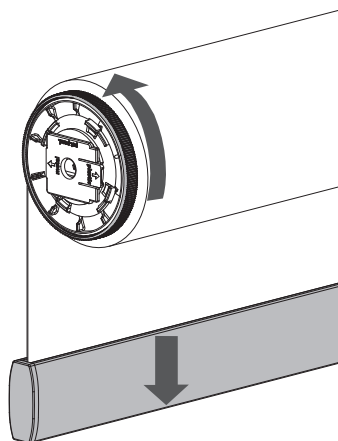


## Adjust top limit

Rotate to raise  
the bottom bar



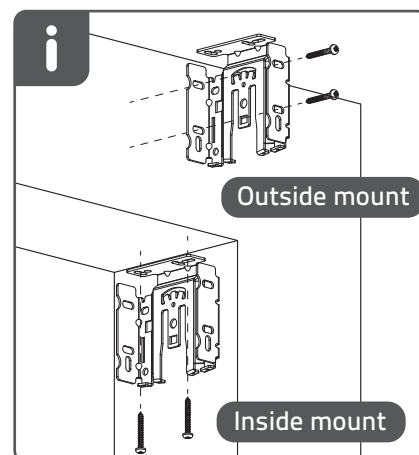
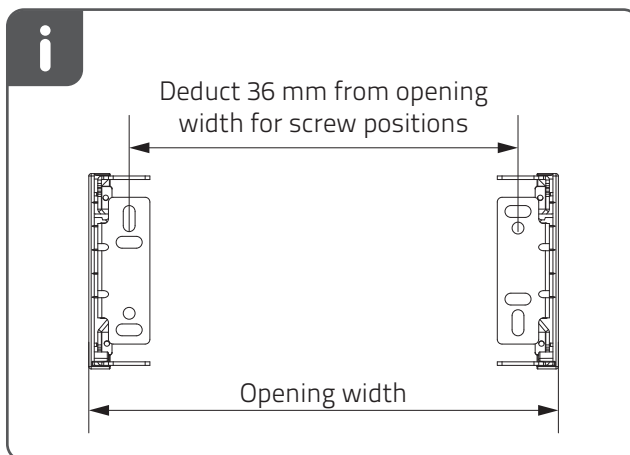
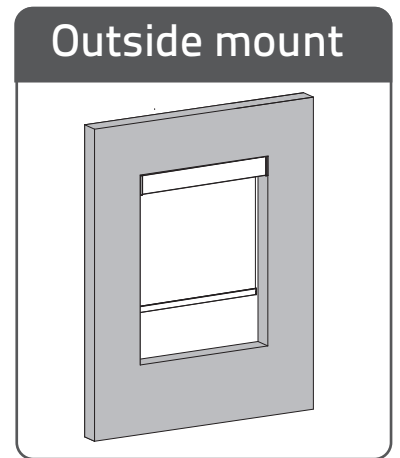
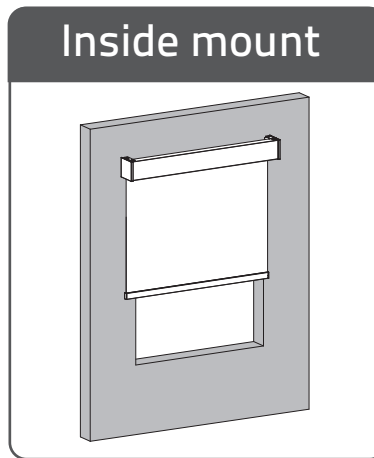
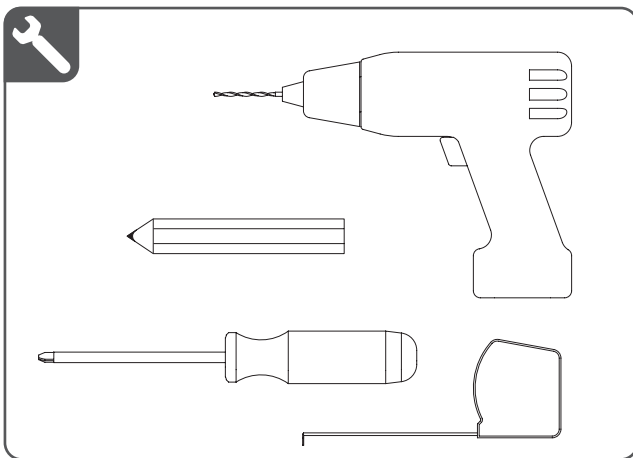
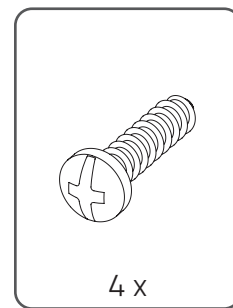
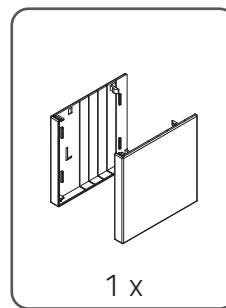
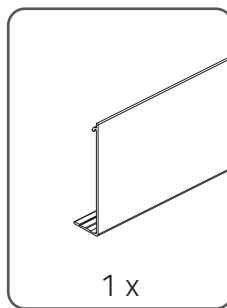
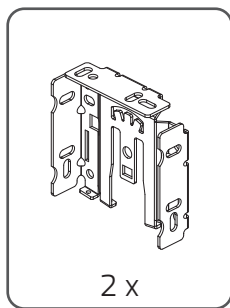
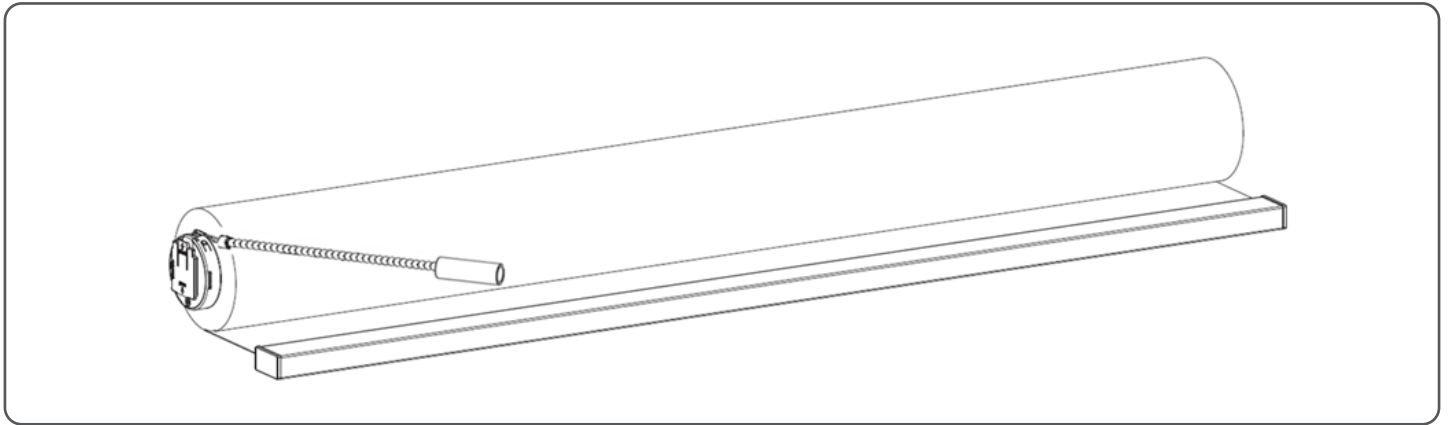
Rotate to lower  
the bottom bar





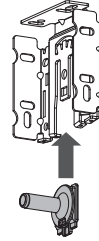
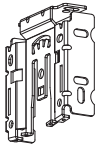
## Installation - Fascia with Motorized

Read the instructions carefully before assembling and using the product.  
Assembling process can be completed by non-professionals. For indoor use only.

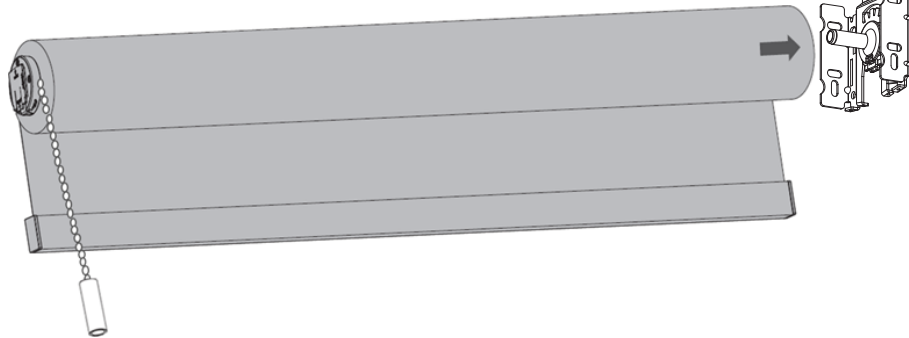
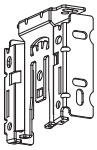


# Installation - Fascia with Motorized

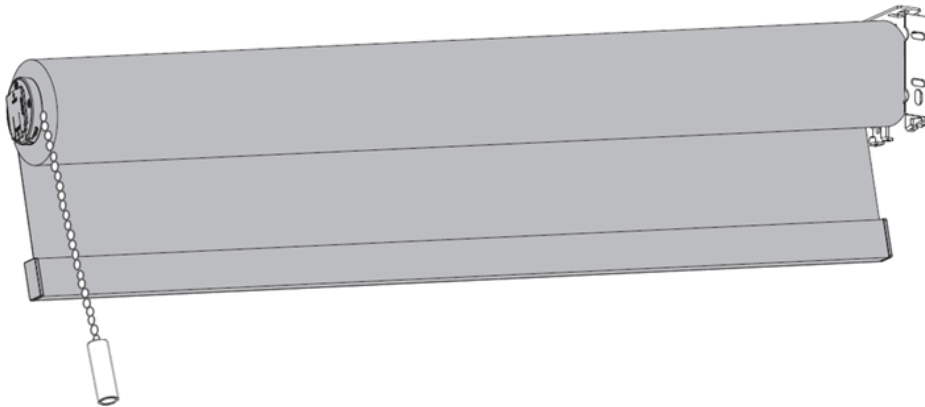
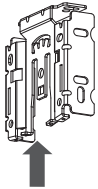
1



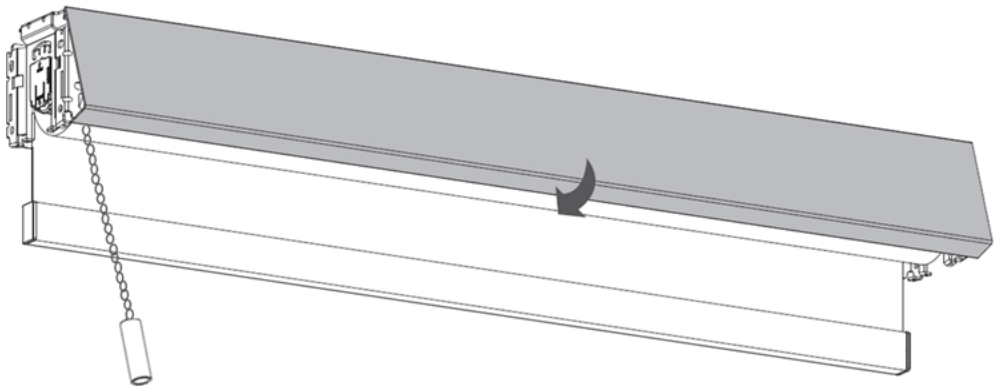
2



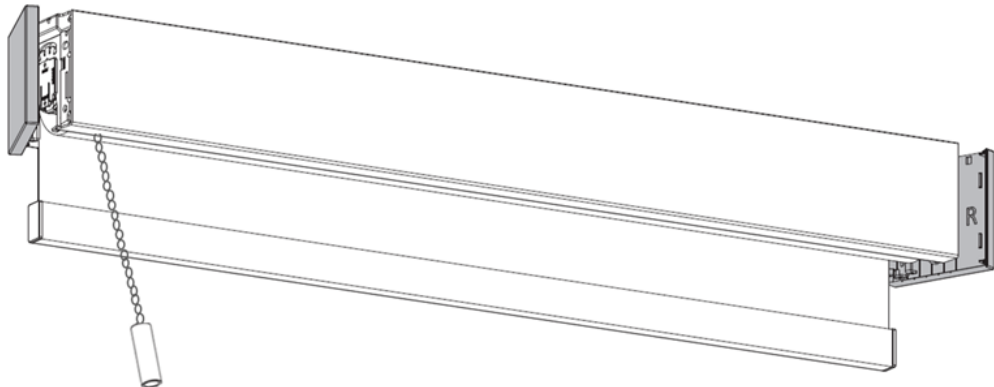
3



4

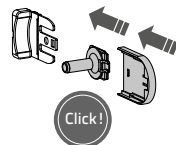
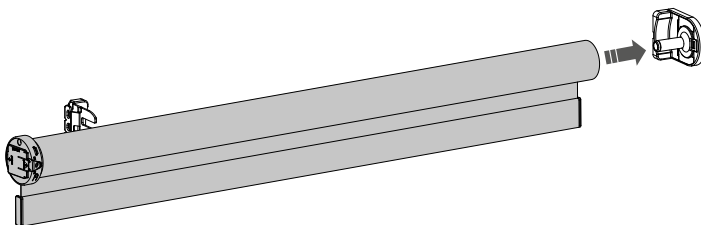
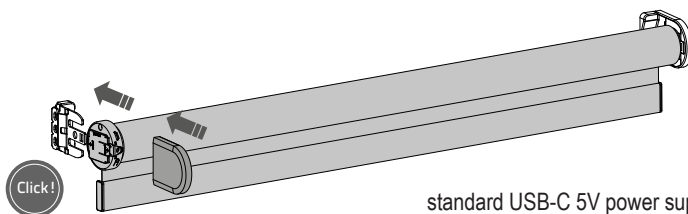


5

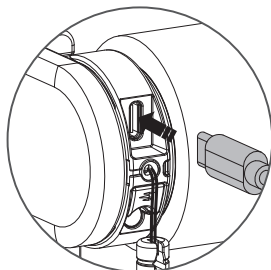


6



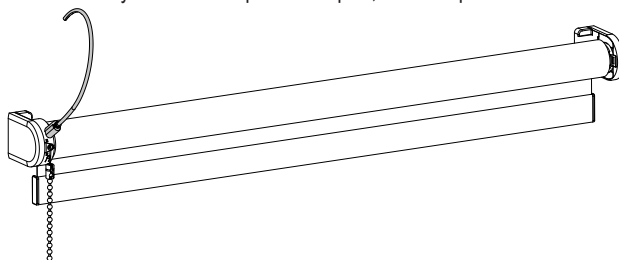
**1** Install the blind**2****3****4**

standard USB-C 5V power supply via  
a USB-C cable.

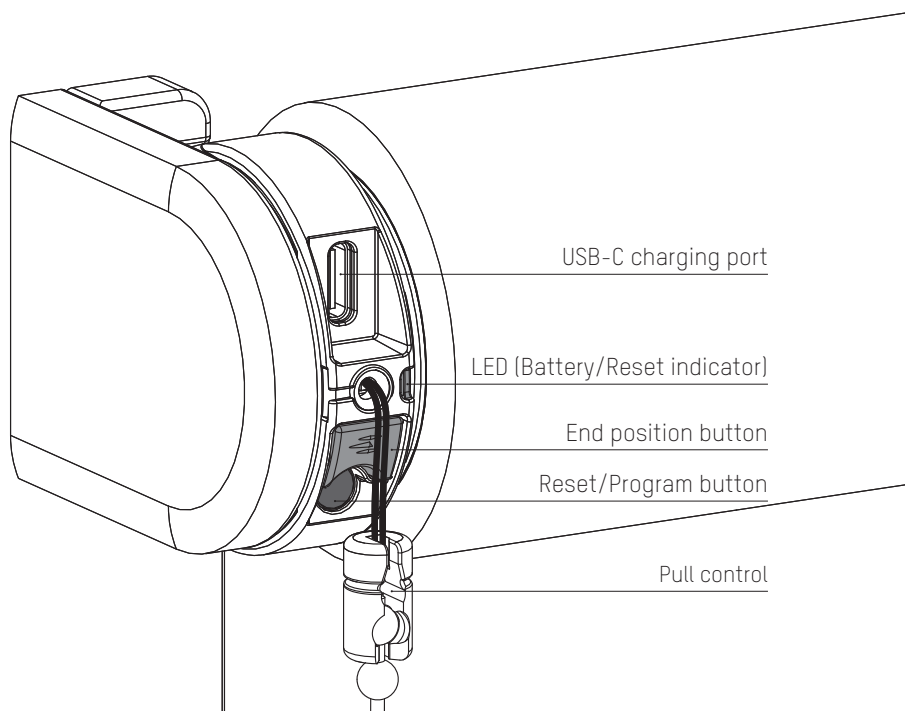
**5** Activate the motor

To activate, connect it to a standard USB-C 5V power supply via a USB-C cable.

This can be your iPhone's power adapter, for example.



# BUTTON PROGRAMMING



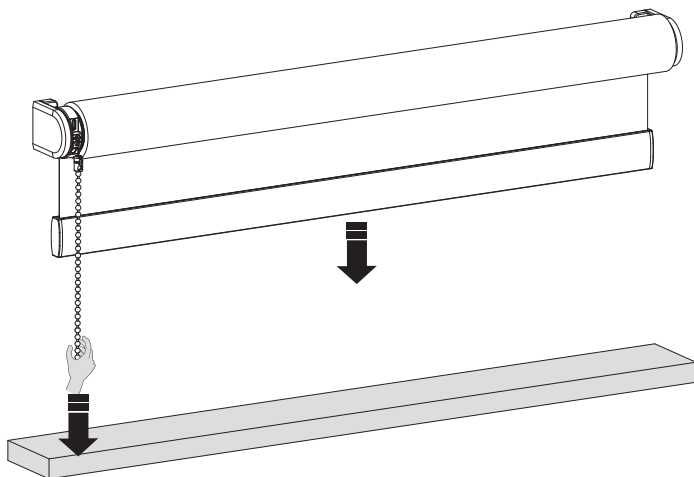
## 1 Set end positions

Beside setting the end positions by the app you are able to set the end positions by pressing the button on the motor.

Pull and hold the chain until the blind has reached the bottom position.

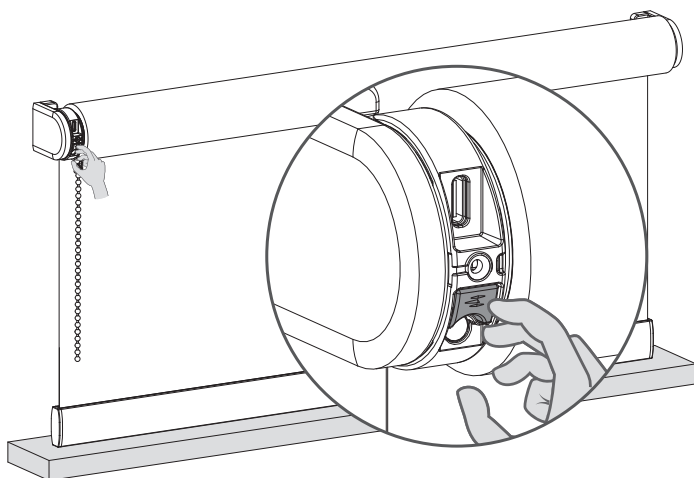
If the blind moves in the opposite direction, release the chain and pull and hold again.

Adjust until the desired bottom position has been reached.



## 2 Save your bottom position

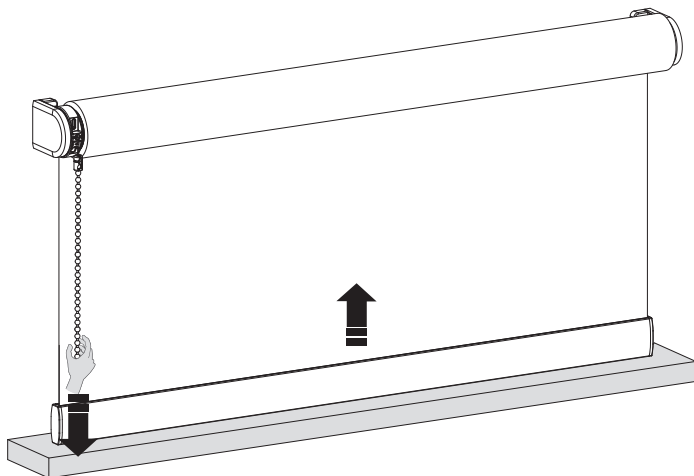
When your blind is positioned at your bottom position hold the button until the blind moves up and down to save your bottom position.



### 3 Move your blind to the top position

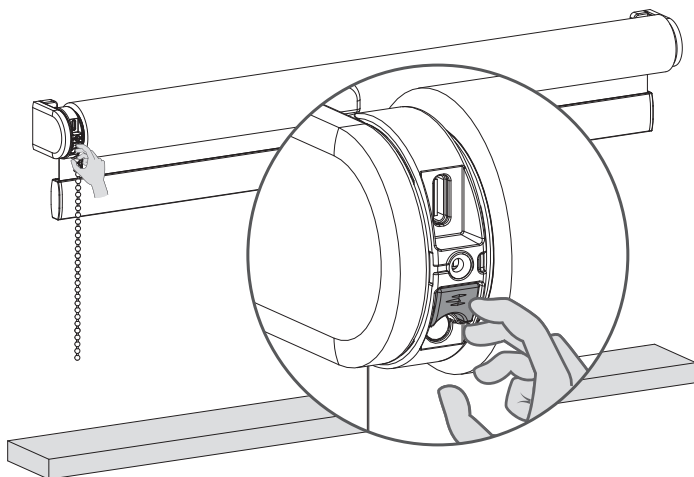
Pull and hold the chain until the blind has reached the top position.  
If the blind moves in the opposite direction, release the chain and pull and hold again.

Adjust until the desired top position has been reached.



### 4 Save your top position

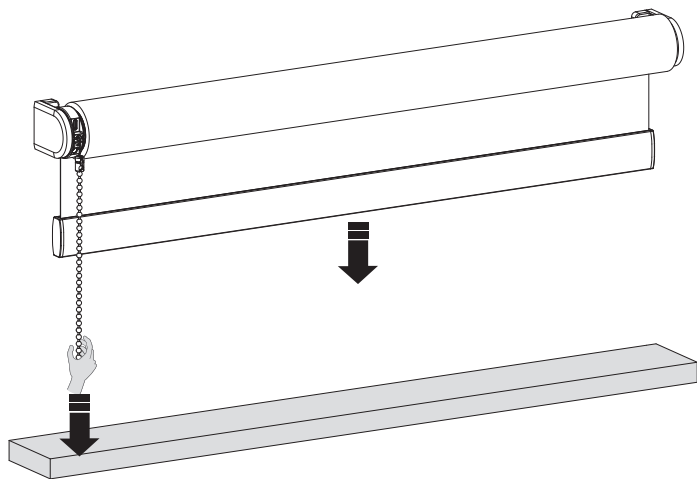
When your blind is positioned at your bottom position hold the button until the blind moves up and down to save your bottom position.



## 5 Adjust your end positions

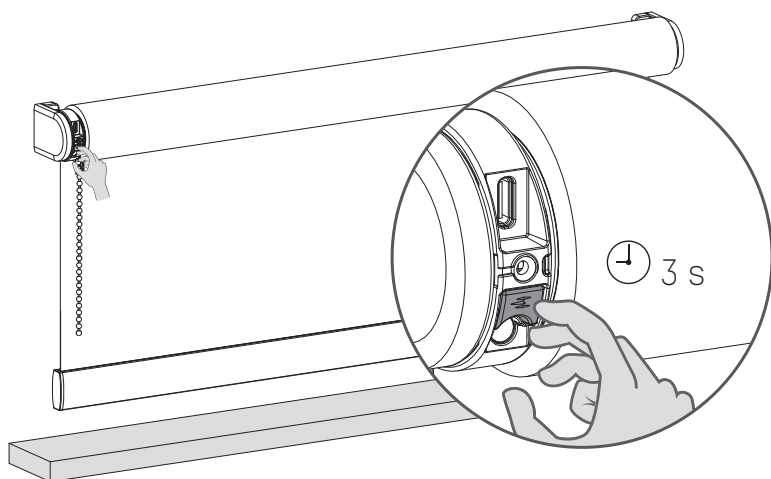
To adjust one of your end positions you need to place your blind at the end position you want to adjust.

Pull and wait until the blind has reached the end position you want to adjust.



## 6 Remove your (bottom/top) position

Hold the end position program button for 3 seconds to remove your (bottom/top) position. The blind will step up and down once to confirm that your end position has been removed. You are now able to set a new (bottom/top) position.



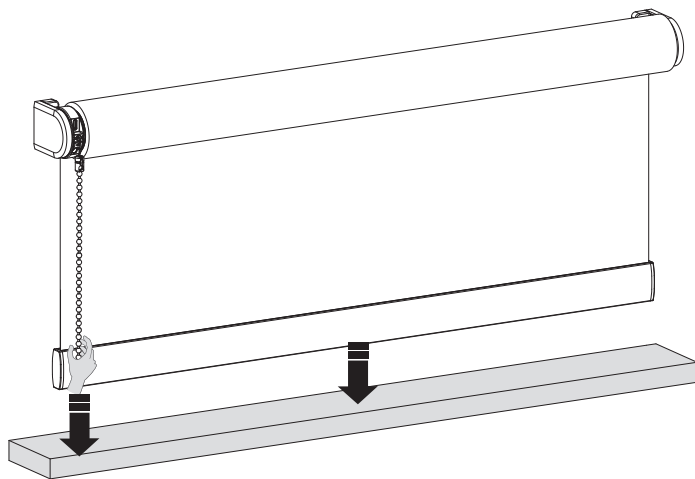


## **7** Move your blind to the new (bottom) position

Pull and hold the chain until the blind has reached the bottom position.

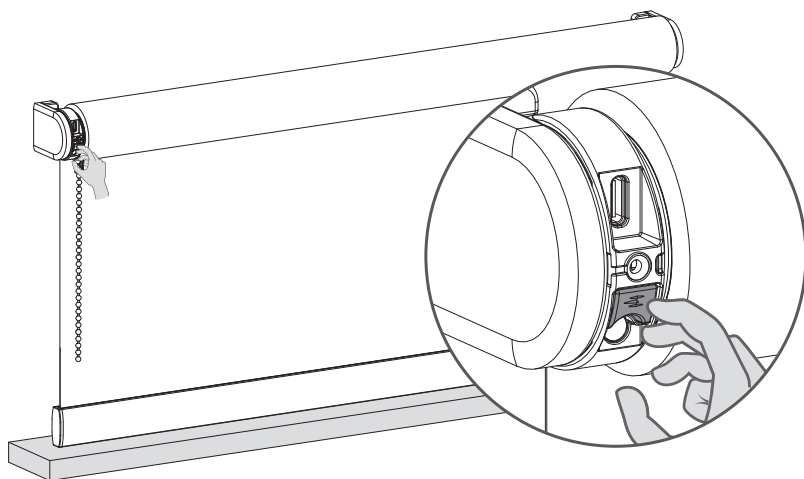
If the blind moves in the opposite direction, release the chain and pull and hold again.

Adjust until the desired bottom position has been reached.



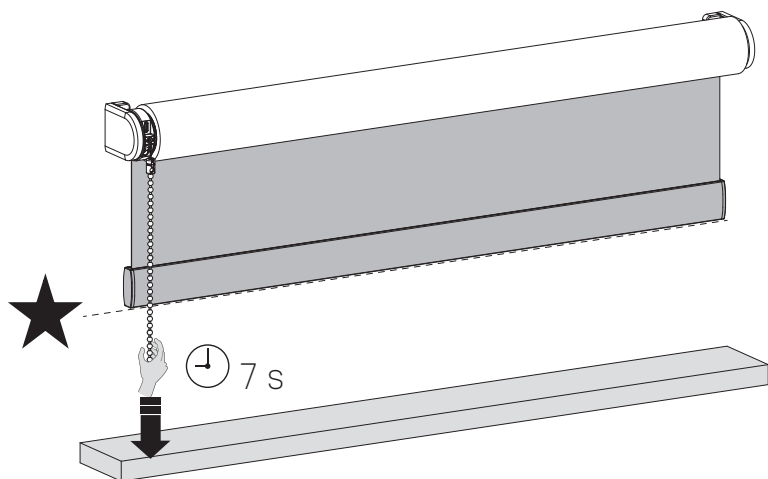
## **8** Save your (bottom) position

When your blind is positioned at your bottom position hold the button until the blind moves up and down to save your bottom position.



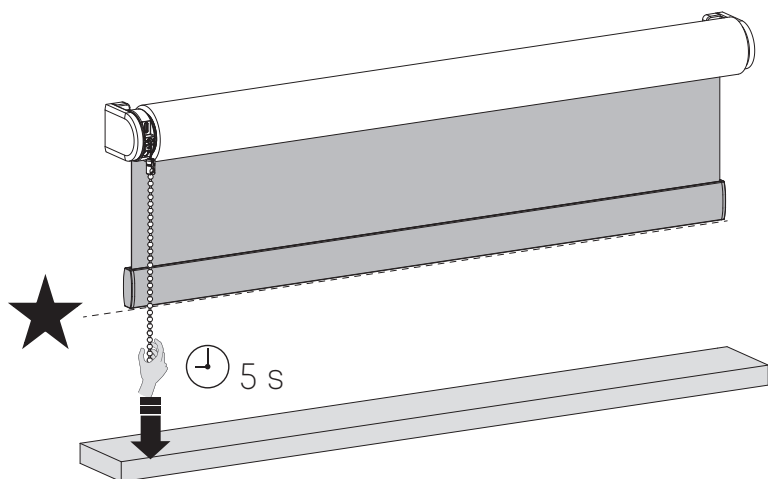
## 9 Save the favorite position

When there is no favorite position programmed you need to position your blind at your favorite position. When the blind is at your favorite position hold the pull until the blind steps up and down once. (Approximately 7 seconds)



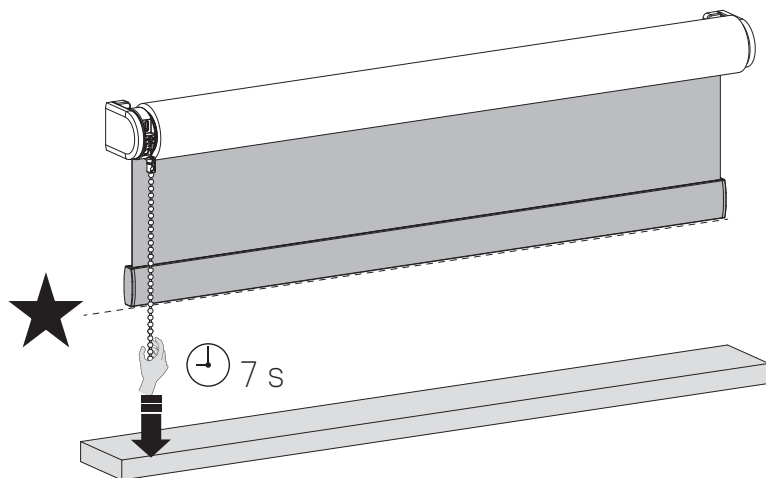
## 10 Control your blind to favorite position

When your blind is not positioned at the favorite position hold the pull for 5 seconds and your blind will move to its favorite position.



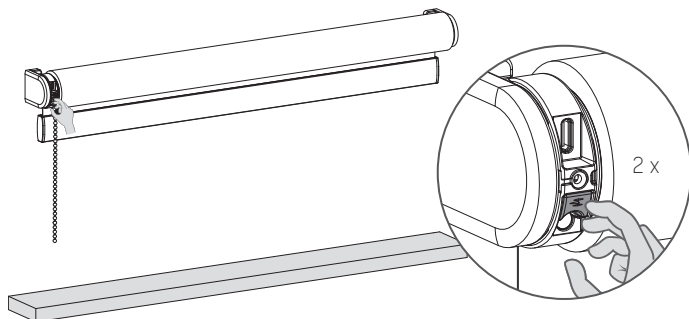
## 11 Save a new favorite position

To remove your previous favorite position you need to place your blind at your current favorite position. (Step 10) Then Hold the pull until the blind steps up and down once. (Approximately 7 seconds) Your favorite position is now removed. Follow step 9 to set your new favorite position.



## i Change direction of rotation

If the position of the blind in the app is opposite to your blind, change the direction of rotation by pressing the End Position button twice within one second.

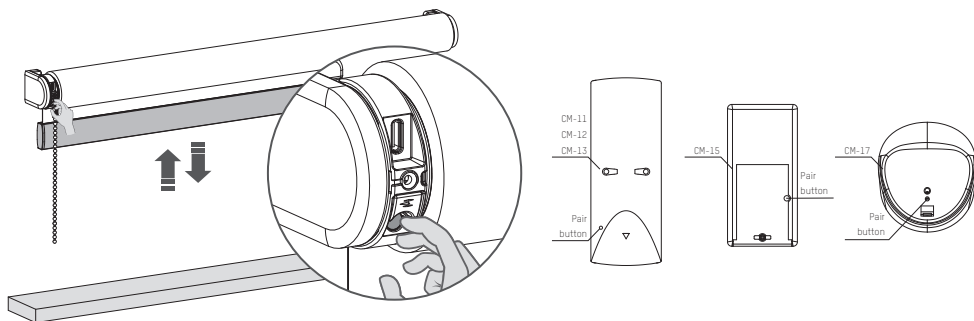


# REMOTE PROGRAMMING

## 1 Pair a remote control

Any MOTION Blinds remote can be connected to your blind.

- 1 Select a channel on the remote and press the program button on the motor to activate program mode. The blind will start stepping up and down.

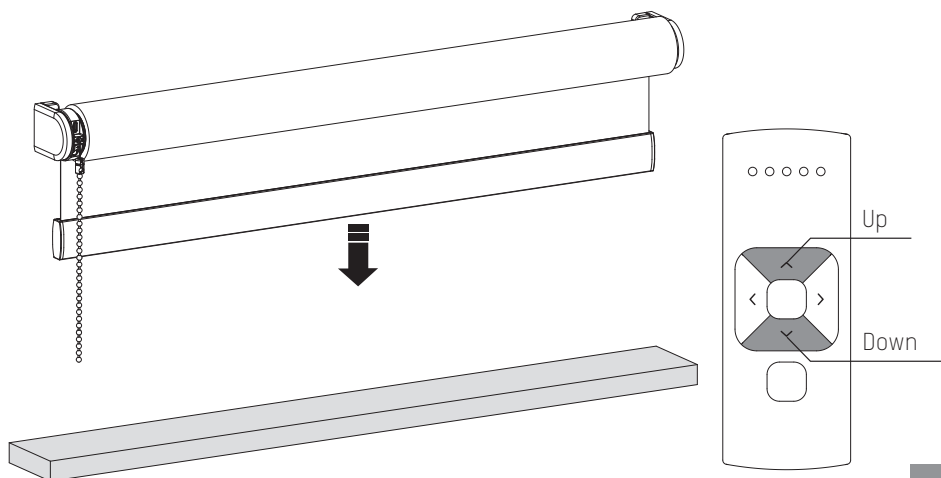


- 2 Press the pair button on the back of the remote control to pair the blind with the selected channel. The blind will shortly stop stepping, indicating that the remote has been paired to the blind.
- 3 Shortly press the program button to deactivate program mode. The blind stops stepping and can be operated.

## 2 Check rotational direction

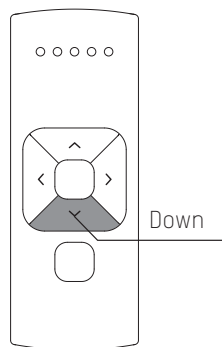
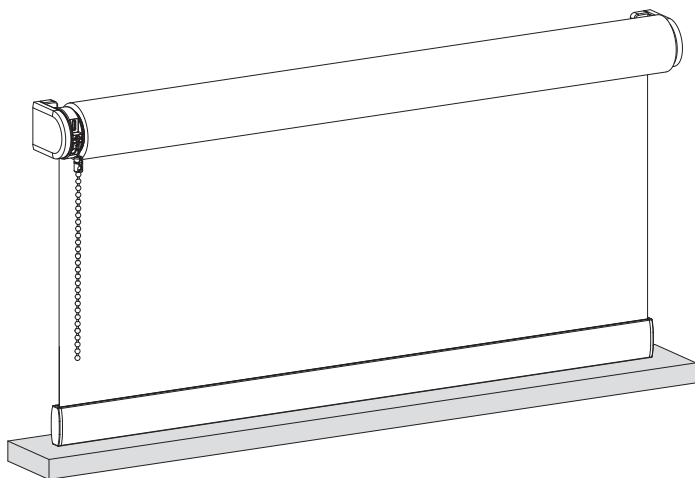
**WARNING:** risk of damage. Stop the blind before reaching the end positions.

- 1 Shortly press the down button to check if the blind unrolls the right way. If the blind moves up, the rotational direction must be changed.
- 2 Simultaneously press the up and down button to change the rotational direction.



### 3 Set bottom position

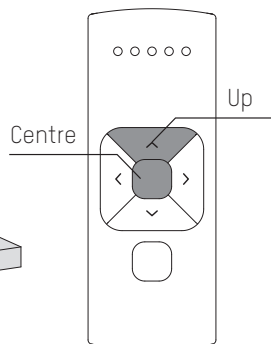
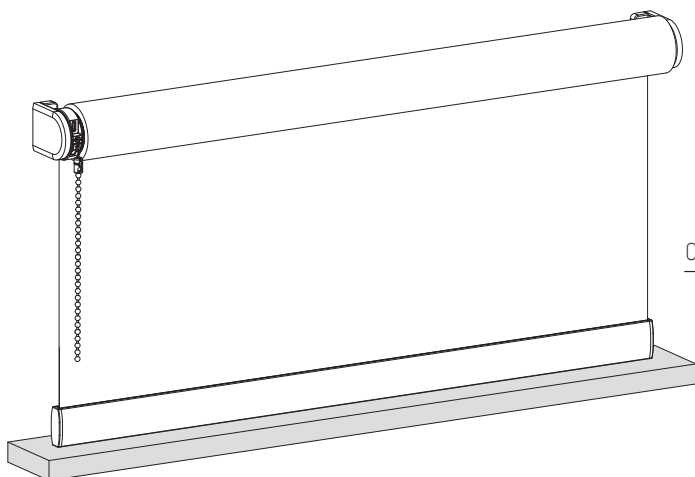
Press and hold the down button until the blind reaches the desired bottom position. **WARNING:** risk of damage.  
Slowly approach the bottom position.



---

### 4 Save bottom position

Simultaneously hold the centre and the up button until the blind stops stepping and starts stepping again.  
The bottom position has been saved.

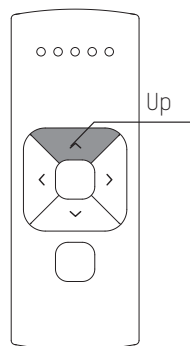
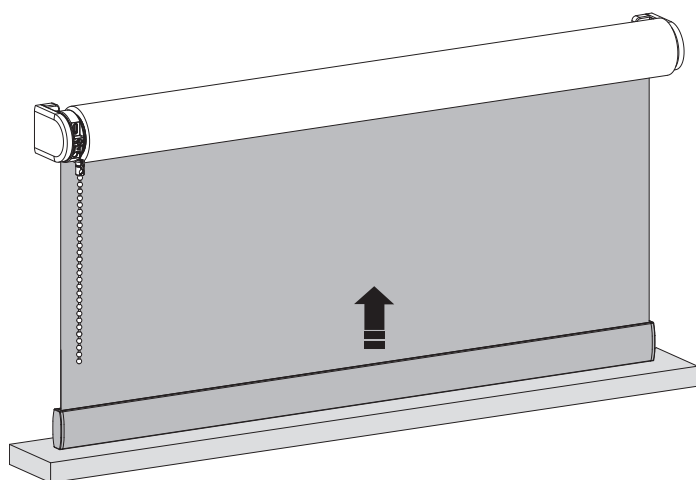


## 5 Set top position

Press and hold the up button until the blind reaches the desired bottom position.

**WARNING:** risk of damage.

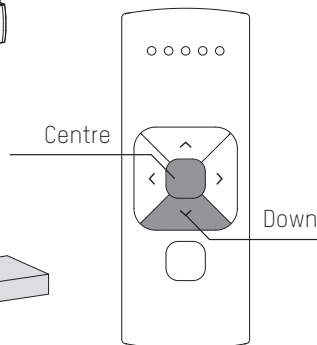
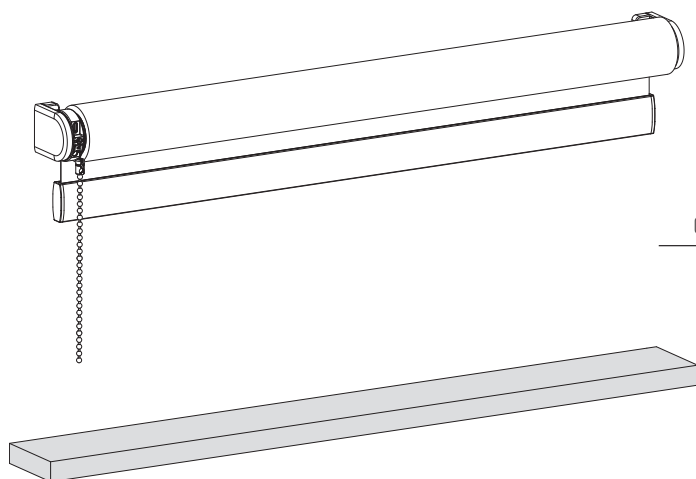
Slowly approach the top position.



## 6 Save top position

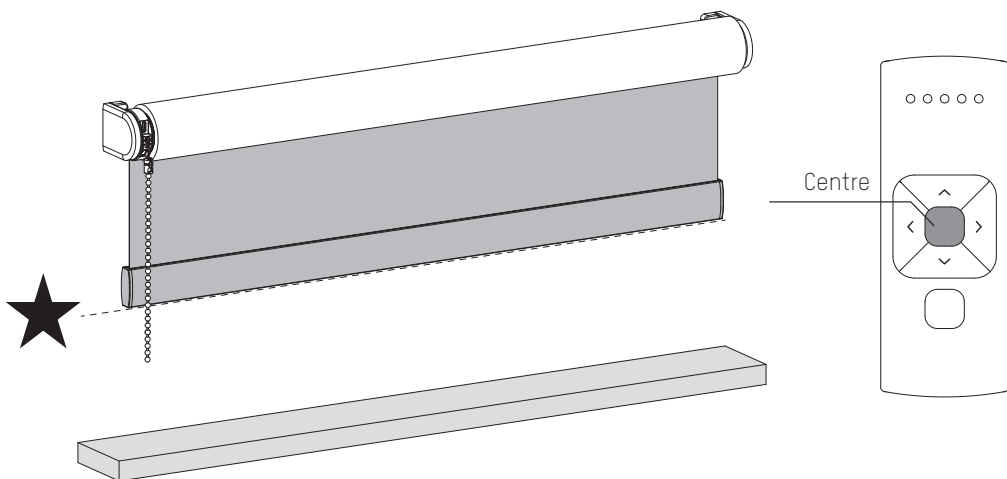
Simultaneously hold the centre and the down button until the blind stops stepping and starts stepping again.

The top position has been saved.



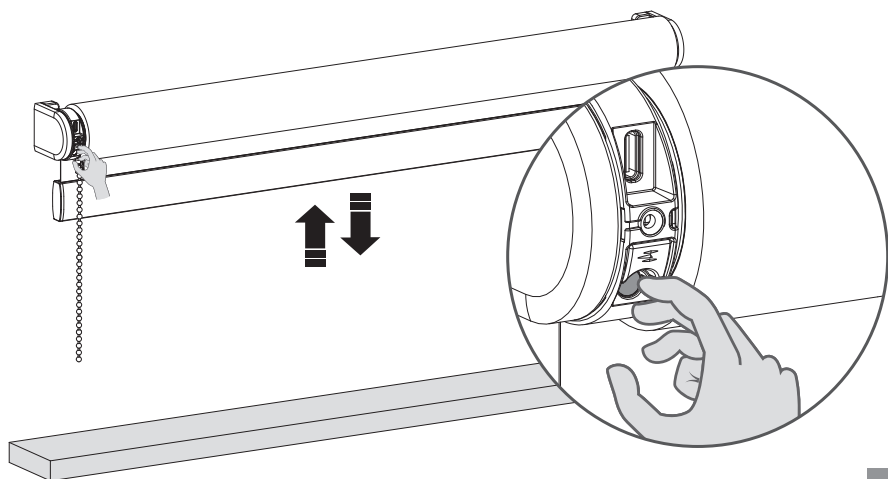
## **7** Set favorite position (optional)

- 1** Move the blind to a desired favourite position.
- 2** Hold the centre button to save this Favourite position. The blind shortly stops stepping indicating the favourite position has been saved.



## **8** Deactivate program mode

Shortly press the program button to deactivate program mode. The blind stops stepping and can be operated.

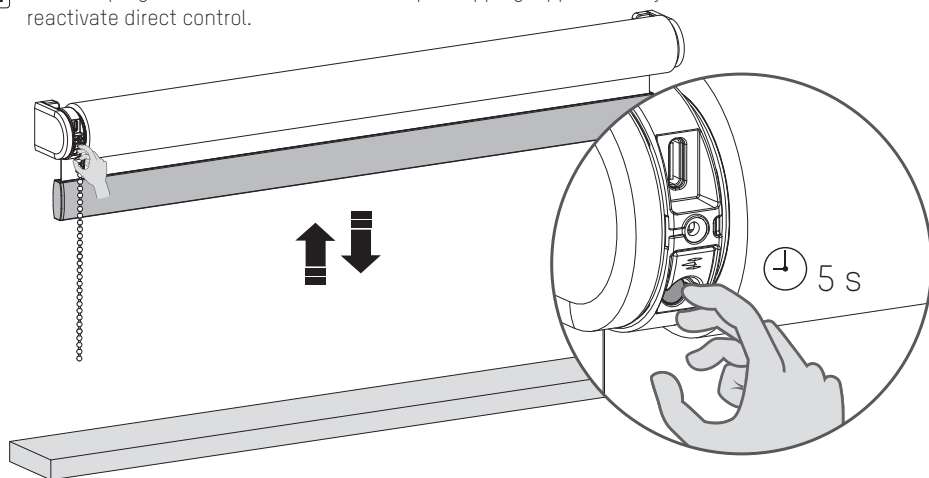




## **i** Deactivate direct control for remote control

When pressing the up or down button on the remote control, the blind directly moves to its end positions (direct control). To operate the blind with smaller steps using the up and down button, direct control can be deactivated. Now, the blind only directly moves to its end positions when the up or down button is held longer than two seconds.

- 1** Press the program button on the motor to activate program mode. The blind starts stepping.
- 2** Hold the program button until the blind stops stepping (approximately 5 seconds) to deactivate or reactivate direct control.

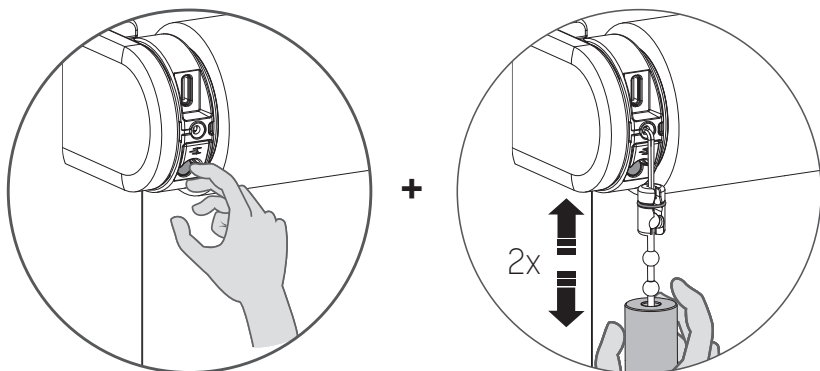


# FAQ

## **i** Activate / deactivate the motor (Transport mode)

To prevent the blind from getting damaged, the motor has a transport mode that makes sure the blind will not be activated before installation.

- 1** Hold the program button and pull twice to activate or deactivate the motor. ( When the motor is activated a green LED will light up, When the motor is deactivated a red LED will light up)



Problem	Cause	Solution
Blind does not work.	Motor is in transport mode.	Activate the motor. See page 2/28.
	Motor battery is empty.	Charge the motor. See page 10.
	Remote battery is empty. (LEDS of remote are flashing rapidly.)	Replace the battery in the remote. See the manual of the remote.
	Remote battery is inserted incorrectly.	Replace the battery in the remote. See the manual of the remote.
	Radio-frequency interference	Make sure that the antenna of the motor is out of the way of metal objects.
	The distance from the phone/bridge/remote to the motor is too far.	Move closer to the motor.
	The remote is not connected to the blind.	Pair the remote with the motor. See page 9.
Motor LED flashes red.	The battery of the motor is empty.	Charge the motor. See page 10.
Blind is not charging.	Charger is not plugged in or does not work.	Try a different charger or make sure the charger is plugged in the outlet.
Multiple blinds respond to a remote. (Unable to program a single blind)	Multiple blinds are paired with a single channel.	Pair the blind with a free channel to program or use single select to program the blind.
Blind moves in small steps.	1) No end limits are programmed. 2) Direct control is deactivated.	1) Program end limits. See page 7, 14-15, 23-24. 2) Activate direct control. See page 26.
Favourite position can not be programmed.	No end limits are programmed.	Program end limits. See page 7, 14-15, 23-24.
Blind lowers too far.	End limits are programmed incorrectly.	Reprogram end limits. See step 7, 16-17, 23-24.
Blind moves in the opposite direction.	The rotational direction has been set incorrectly.	Change the rotational direction. See page 8, 19, 22.
The blind keeps moving up and down.	The blind is in program mode.	Press the program button on the motor to exit program mode.
The blind firmware will not update to the latest version.	The blinds bluetooth connection is not stable.	1) Close the app and reconnect with your motor. 2) De-activate the motor and re-activate the motor and try to update again. See page 28

# MotionBlinds bluetooth app

**1**

## Download the MotionBlinds bluetooth app

Download the Motion Blinds bluetooth app from the App Store.



App Store  
Download the  
MotionBlinds  
Bluetooth app  
[rtube.nl/red1614](https://rtube.nl/red1614)



Google Play  
Download the  
MotionBlinds  
Bluetooth app  
[rtube.nl/red1615](https://rtube.nl/red1615)



**2**

## Setup the blind

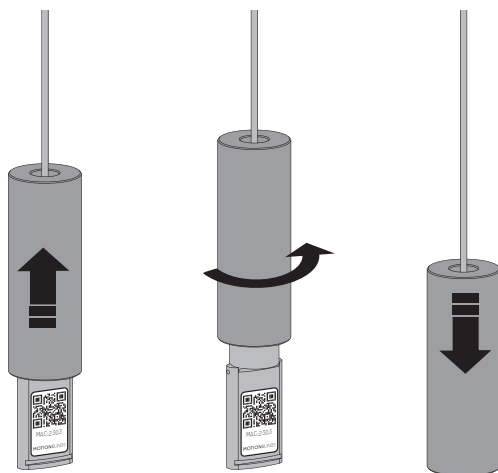
Open the MotionBlinds bluetooth app and tap the + sign. The app will now guide you through the setup process.

The end positions of the blind, top and bottom, are pre-programmed. These can be adjusted in the app.



### 3 Hide the MotionBlinds Setup Code

Slide the tassel up and rotate a quarter turn to hide the MotionBlinds Setup Code into the tassel.



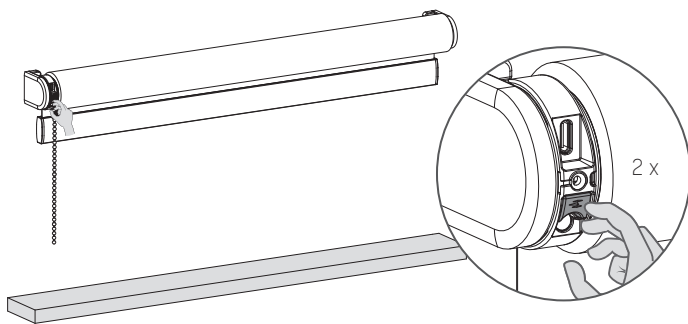
### 4 Adjustments

#### Change direction of rotation :

If the position of the blind in the app is opposite to your blind, change the direction of rotation by pressing the End Position button twice within one second.

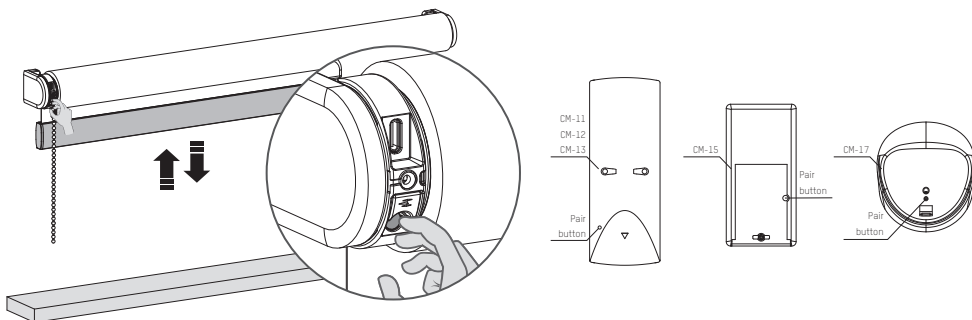
#### Change end positions :

If the blinds end positions are incorrect please open the settings of the blind and adjust the bottom / top position.



## **i** Pair a remote control

- 1** Select a channel on the remote and press the program button on the motor to activate program mode. The blind will start stepping up and down.



- 2** Press the pair button on the back of the remote control to pair the blind with the selected channel. The blind will shortly stop stepping, indicating that the remote has been paired to the blind.
- 3** Shortly press the program button to deactivate program mode. The blind stops stepping and can be operated.

## **i** Pair with a bridge

With the MotionBlinds bridge you can unlock more options, such as voice assistants and the ability to control your blinds when you are not at home.



App Store  
Download the  
MotionBlinds  
Wi-Fi app  
[rtube.nl/red981](https://rtube.nl/red981)



Google Play  
Download the  
MotionBlinds  
Wi-Fi app  
[rtube.nl/red982](https://rtube.nl/red982)

